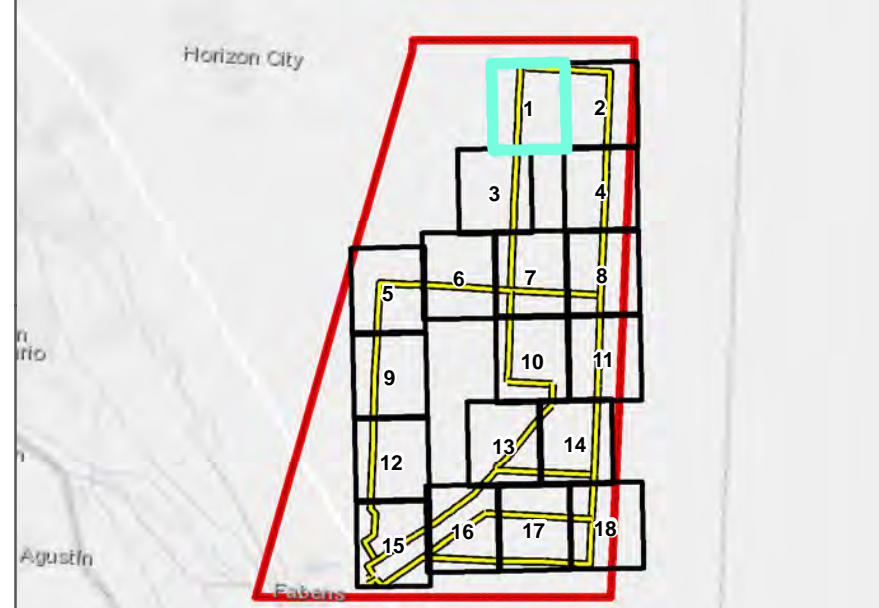


0 250 500
FEET

FIGURE 1-1

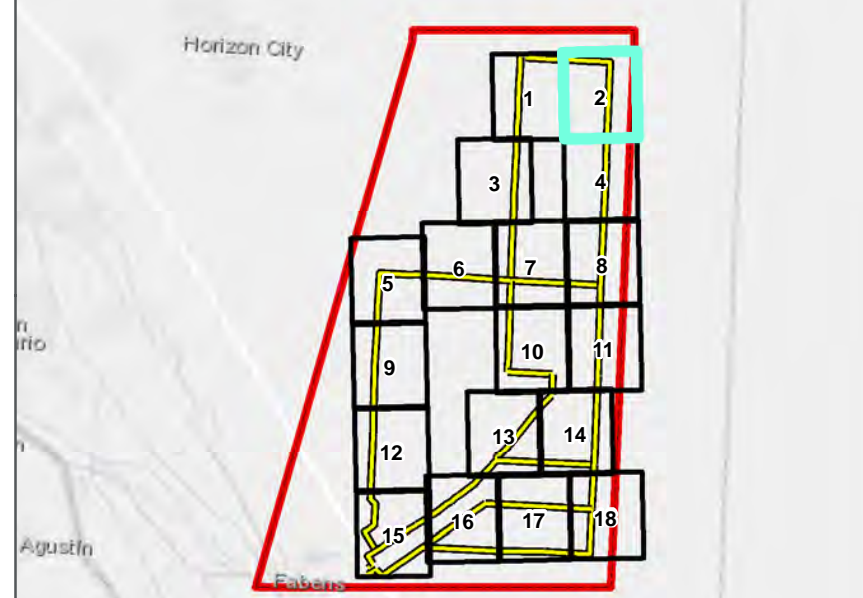


- PROJECT COMPONENTS**
- PHASE II STUDY AREA
 - ALTERNATIVE TRANSMISSION LINE SEGMENT
 - SEGMENT NODE

- LANDUSE**
- NOTIFIED PARCEL
 - PARCEL BOUNDARY
 - HABITABLE STRUCTURE WITHIN 300 FEET OF ALTERNATIVE SEGMENT

- EXISTING UTILITIES**
- EXISTING 69 KV TRANSMISSION LINE
 - EXISTING 115 KV TRANSMISSION LINE
 - SUBSTATION SITE





- PROJECT COMPONENTS**
- PHASE II STUDY AREA
 - ALTERNATIVE TRANSMISSION LINE SEGMENT
 - SEGMENT NODE

- LANDUSE**
- NOTIFIED PARCEL
 - PARCEL BOUNDARY
 - HABITABLE STRUCTURE WITHIN 300 FEET OF ALTERNATIVE SEGMENT

- EXISTING UTILITIES**
- EXISTING 69 KV TRANSMISSION LINE
 - EXISTING 115 KV TRANSMISSION LINE
 - SUBSTATION SITE

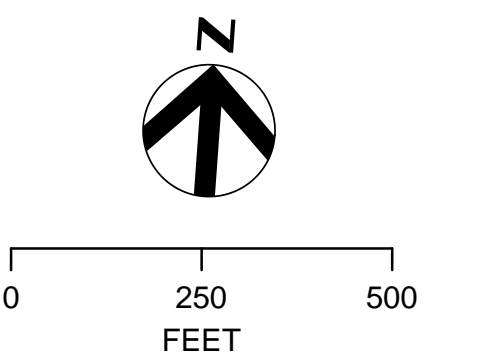
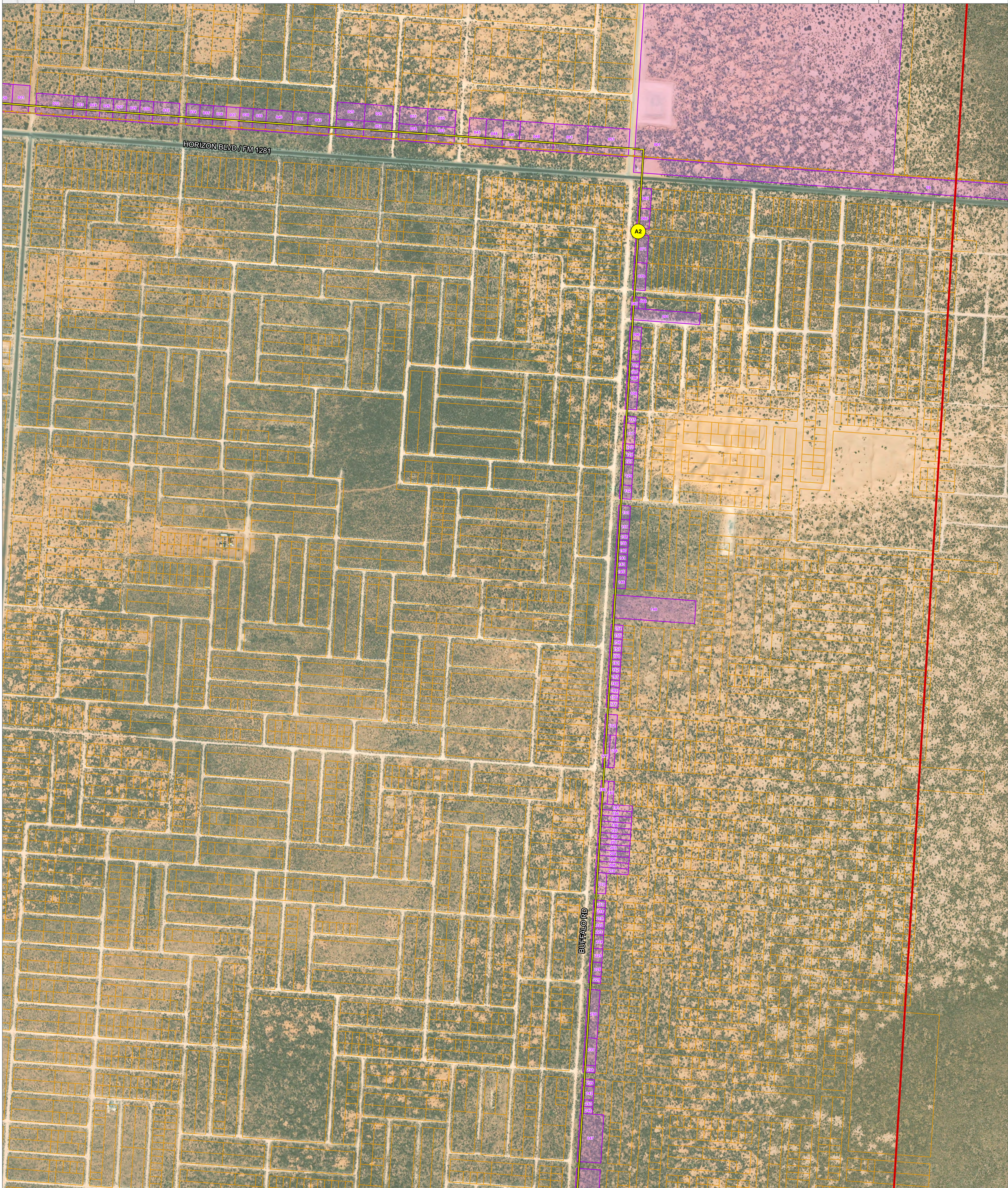
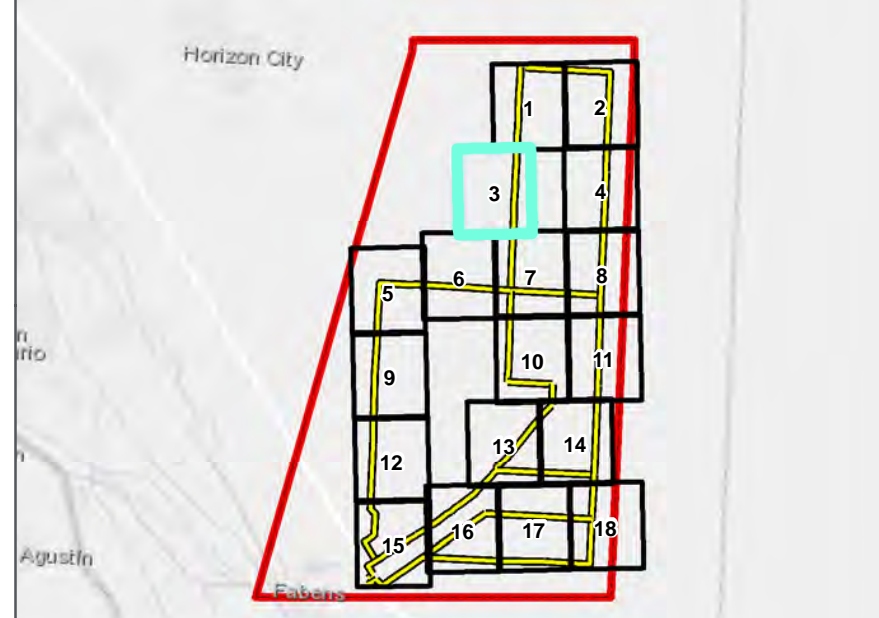


FIGURE 1-2





- PROJECT COMPONENTS**
- ▭ PHASE II STUDY AREA
 - ▭ ALTERNATIVE TRANSMISSION LINE SEGMENT
 - SEGMENT NODE

- LANDUSE**
- ▭ NOTIFIED PARCEL
 - ▭ PARCEL BOUNDARY
 - HABITABLE STRUCTURE WITHIN 300 FEET OF ALTERNATIVE SEGMENT

- EXISTING UTILITIES**
- EXISTING 69 KV TRANSMISSION LINE
 - EXISTING 115 KV TRANSMISSION LINE
 - ▭ SUBSTATION SITE

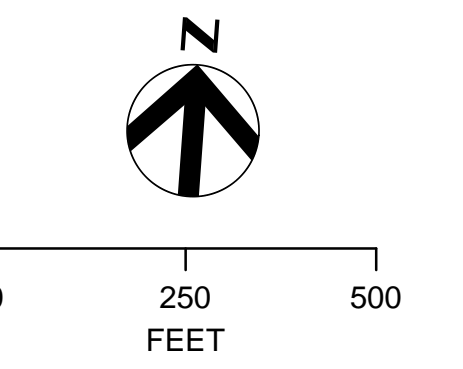
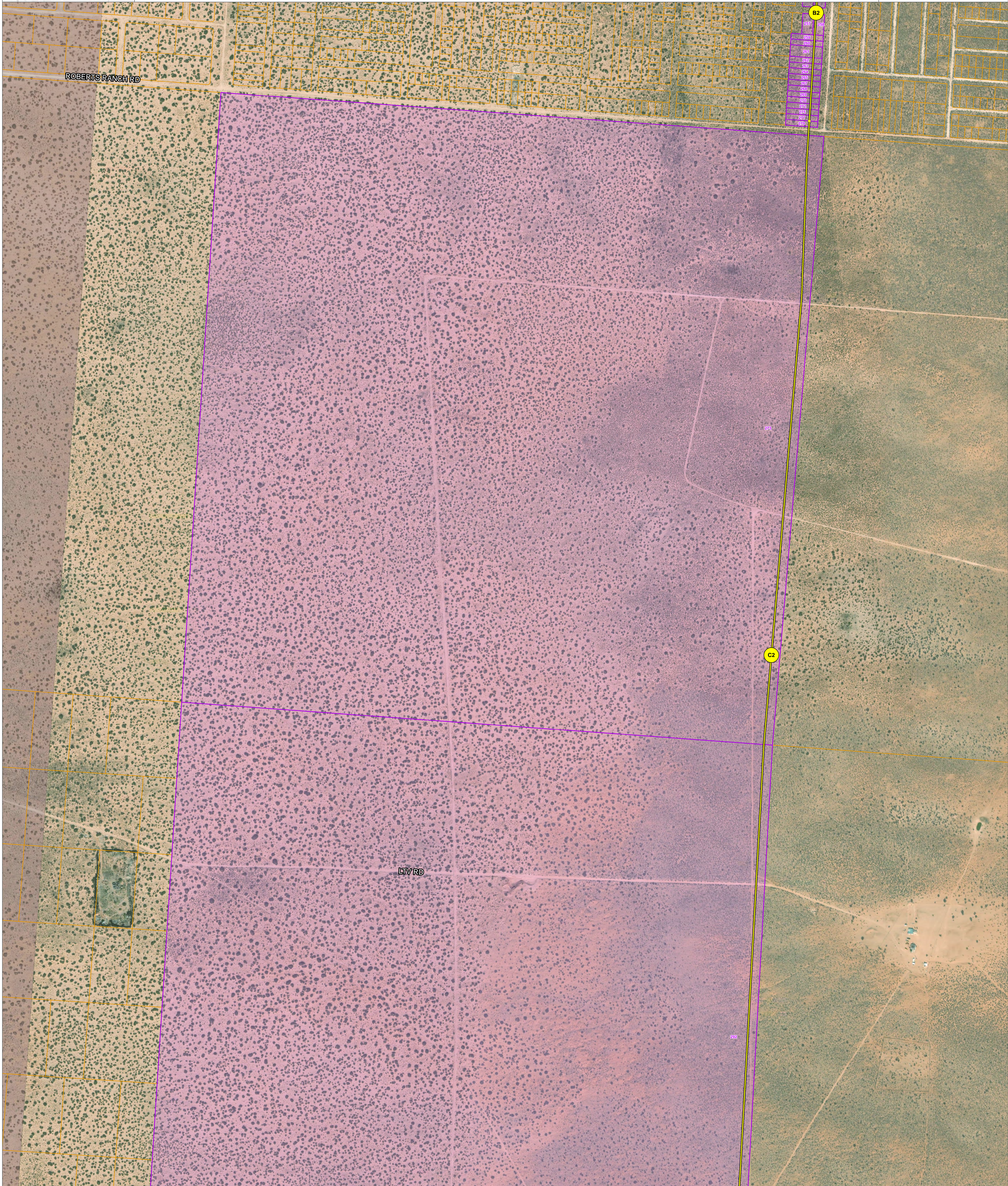
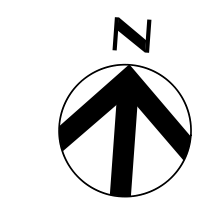


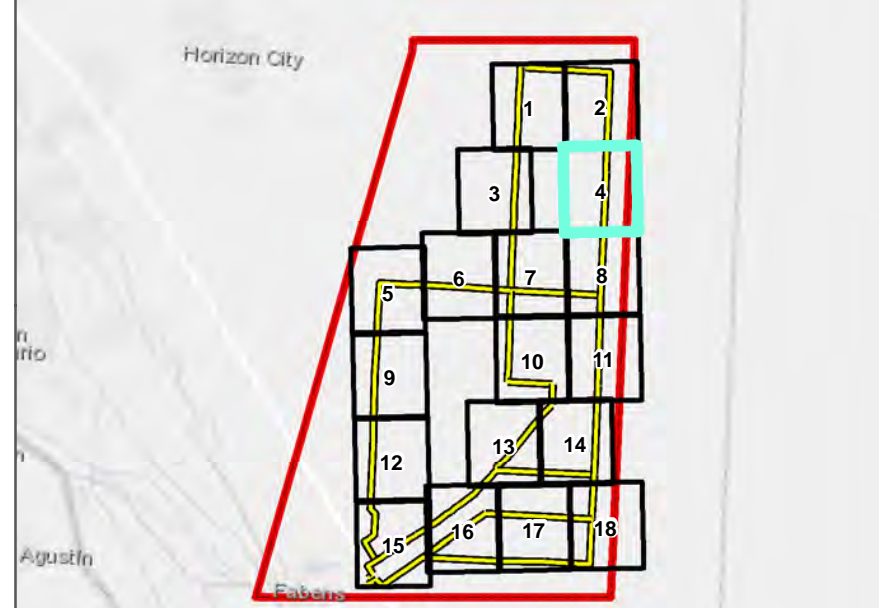
FIGURE 1-3





0 250 500
FEET

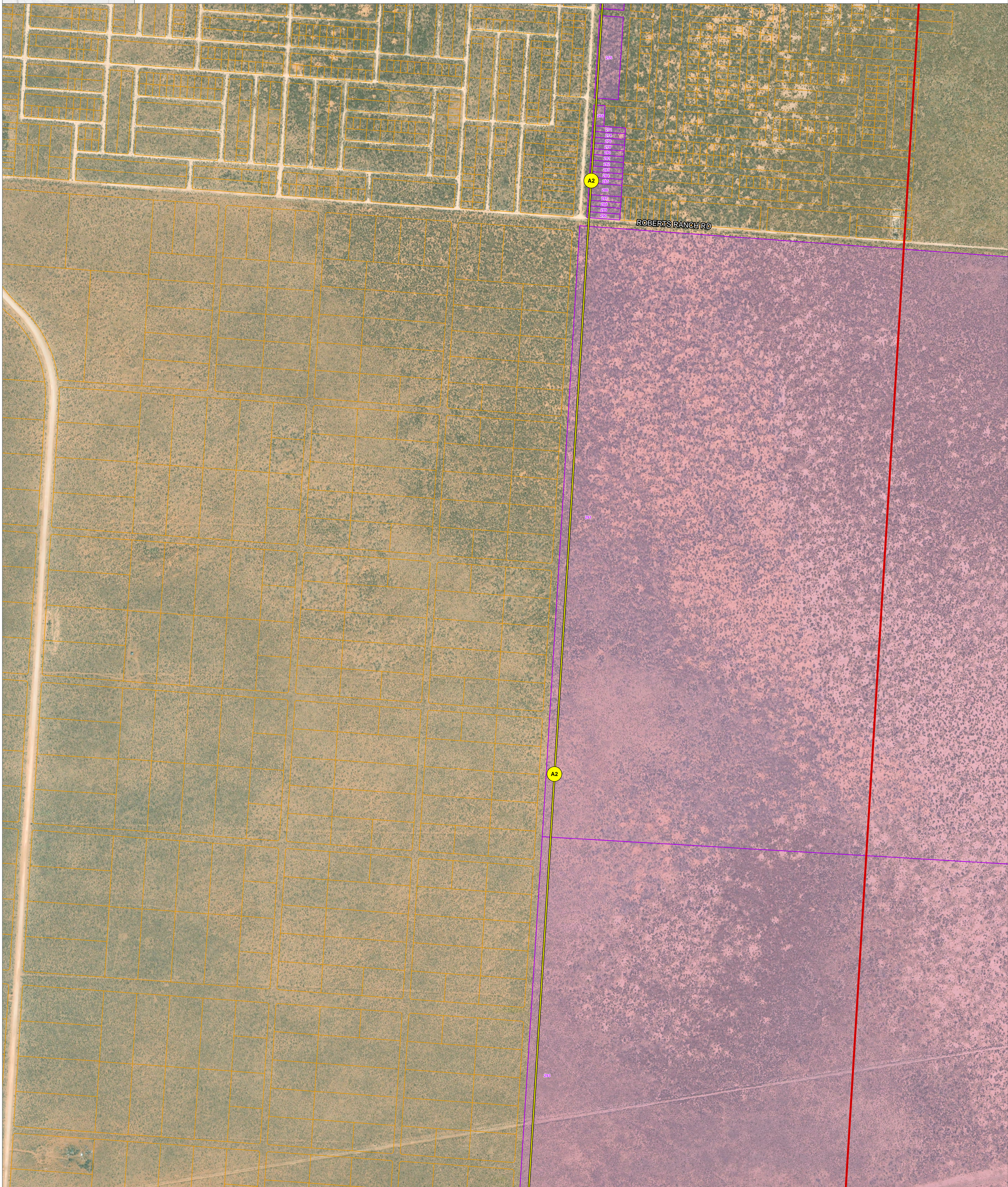
FIGURE 1-4

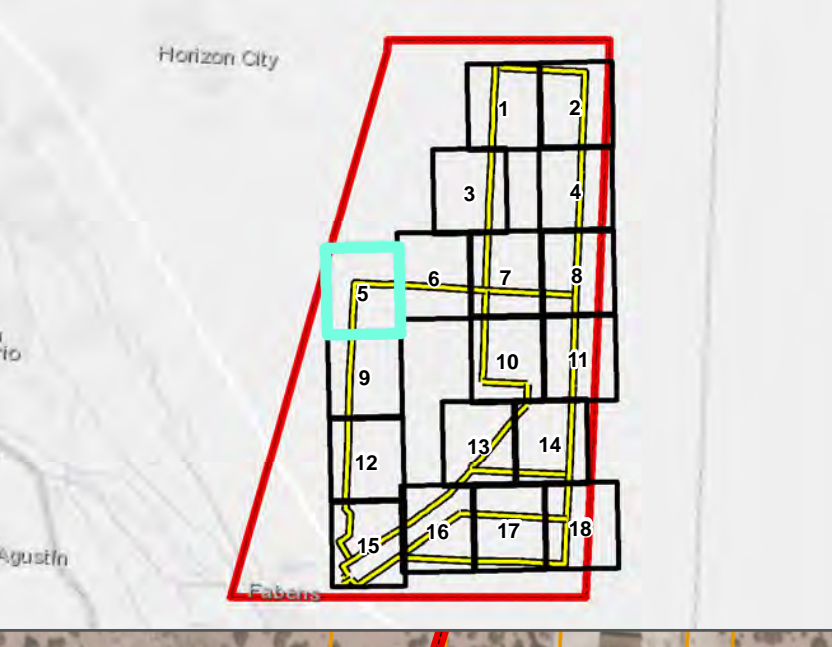


- PROJECT COMPONENTS**
- PHASE II STUDY AREA
 - ALTERNATIVE TRANSMISSION LINE SEGMENT
 - SEGMENT NODE

- LANDUSE**
- NOTIFIED PARCEL
 - PARCEL BOUNDARY
 - HABITABLE STRUCTURE WITHIN 300 FEET OF ALTERNATIVE SEGMENT

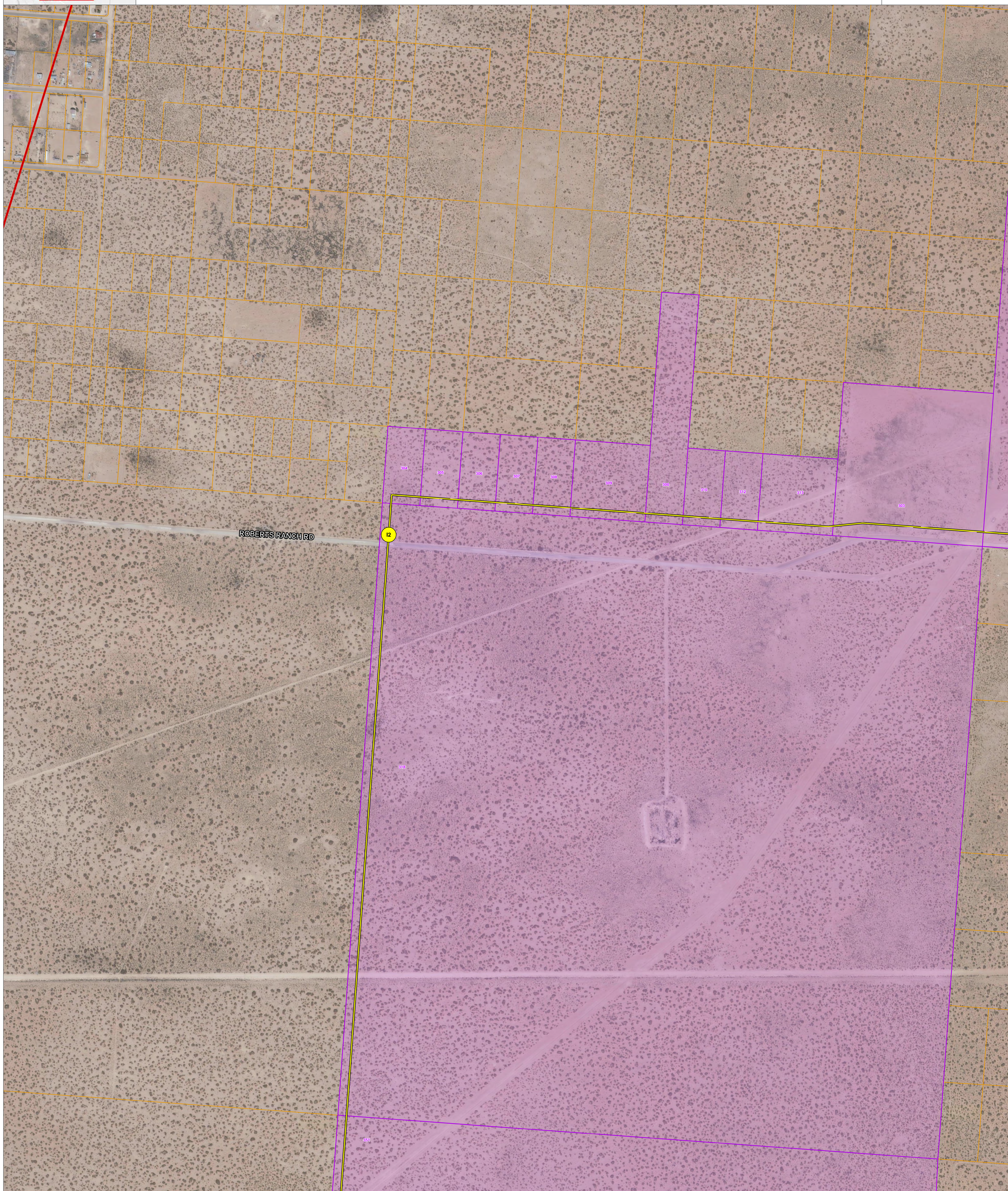
- EXISTING UTILITIES**
- EXISTING 69 KV TRANSMISSION LINE
 - EXISTING 115 KV TRANSMISSION LINE
 - SUBSTATION SITE

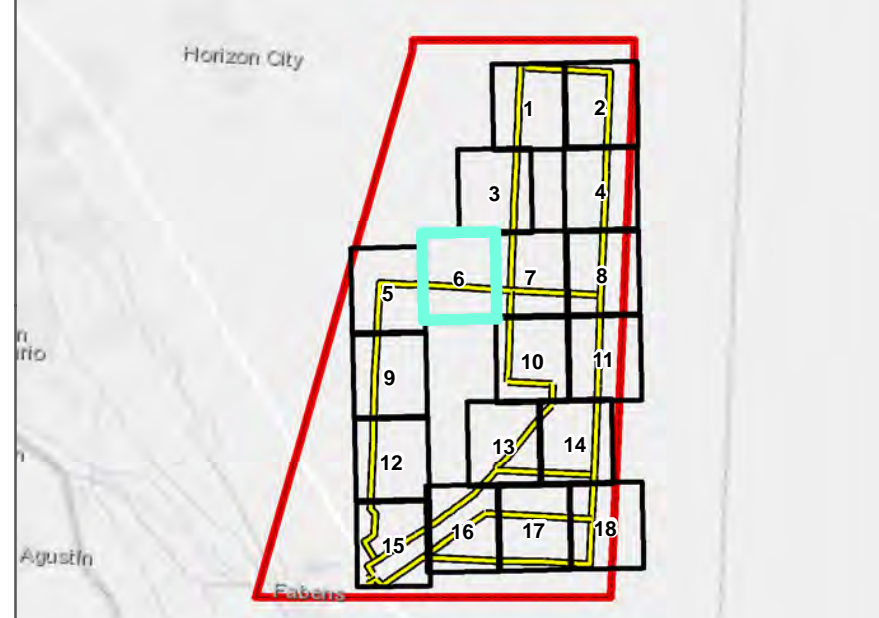




- | | | |
|--|---|---|
| <p>PROJECT COMPONENTS</p> <ul style="list-style-type: none"> ▭ PHASE II STUDY AREA ▭ ALTERNATIVE TRANSMISSION LINE SEGMENT ● SEGMENT NODE | <p>LANDUSE</p> <ul style="list-style-type: none"> ▭ NOTIFIED PARCEL ▭ PARCEL BOUNDARY ● HABITABLE STRUCTURE WITHIN 300 FEET OF ALTERNATIVE SEGMENT | <p>EXISTING UTILITIES</p> <ul style="list-style-type: none"> — EXISTING 69 KV TRANSMISSION LINE — EXISTING 115 KV TRANSMISSION LINE ▭ SUBSTATION SITE |
|--|---|---|

FIGURE 1-5





- PROJECT COMPONENTS**
- ▭ PHASE II STUDY AREA
 - ▭ ALTERNATIVE TRANSMISSION LINE SEGMENT
 - SEGMENT NODE

- LANDUSE**
- ▭ NOTIFIED PARCEL
 - ▭ PARCEL BOUNDARY
 - HABITABLE STRUCTURE WITHIN 300 FEET OF ALTERNATIVE SEGMENT

- EXISTING UTILITIES**
- EXISTING 69 KV TRANSMISSION LINE
 - EXISTING 115 KV TRANSMISSION LINE
 - ▭ SUBSTATION SITE

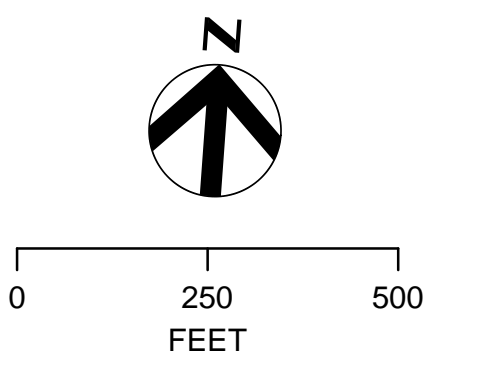
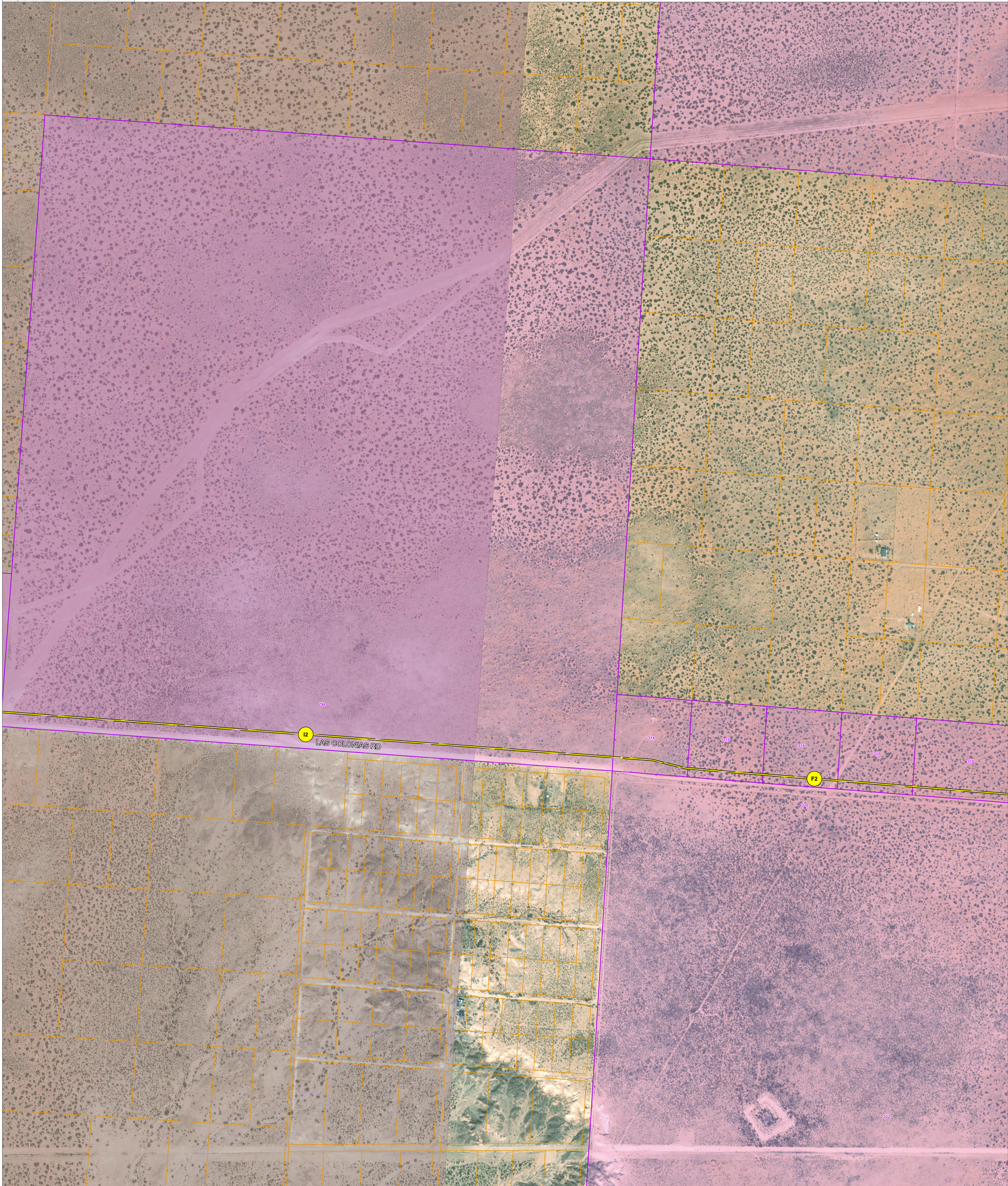
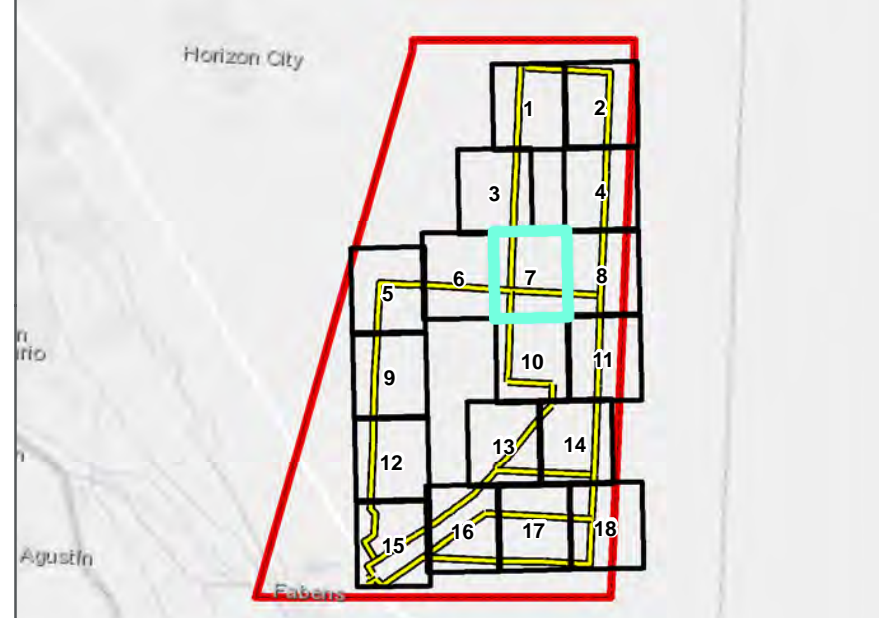


FIGURE 1-6





- PROJECT COMPONENTS**
- ▭ PHASE II STUDY AREA
 - ▭ ALTERNATIVE TRANSMISSION LINE SEGMENT
 - SEGMENT NODE

- LANDUSE**
- ▭ NOTIFIED PARCEL
 - ▭ PARCEL BOUNDARY
 - HABITABLE STRUCTURE WITHIN 300 FEET OF ALTERNATIVE SEGMENT

- EXISTING UTILITIES**
- EXISTING 69 KV TRANSMISSION LINE
 - EXISTING 115 KV TRANSMISSION LINE
 - ▭ SUBSTATION SITE

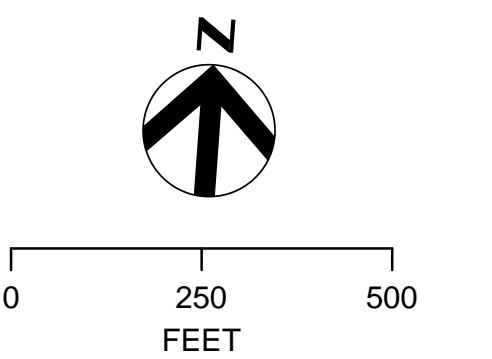
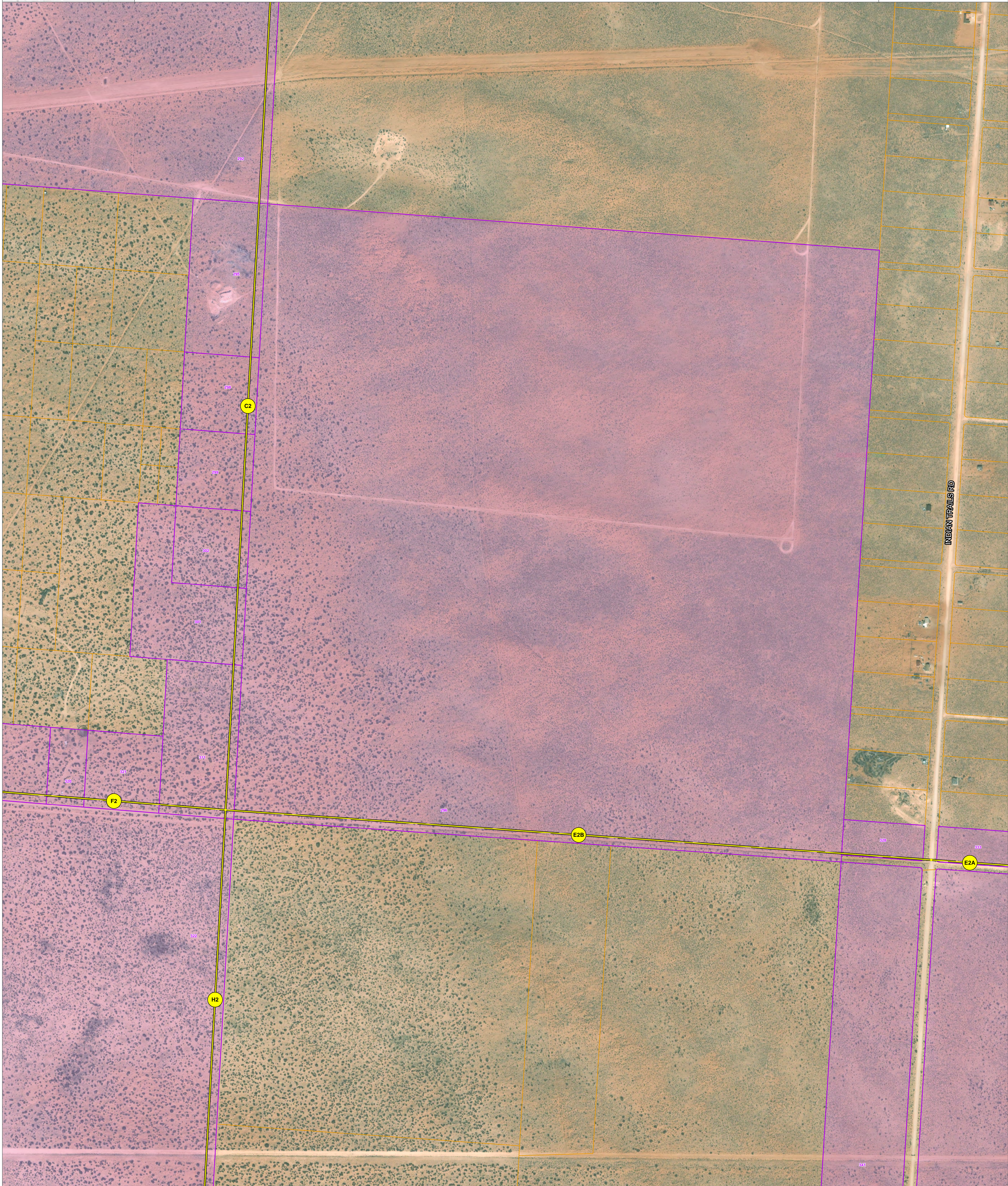
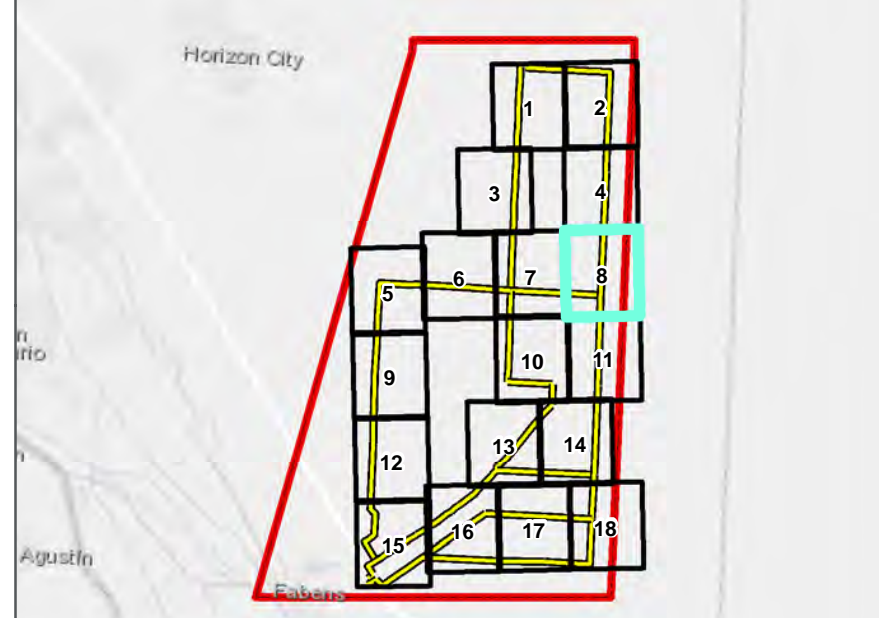


FIGURE 1-7





- PROJECT COMPONENTS**
- PHASE II STUDY AREA
 - ALTERNATIVE TRANSMISSION LINE SEGMENT
 - SEGMENT NODE

- LANDUSE**
- NOTIFIED PARCEL
 - PARCEL BOUNDARY
 - HABITABLE STRUCTURE WITHIN 300 FEET OF ALTERNATIVE SEGMENT

- EXISTING UTILITIES**
- EXISTING 69 KV TRANSMISSION LINE
 - EXISTING 115 KV TRANSMISSION LINE
 - SUBSTATION SITE

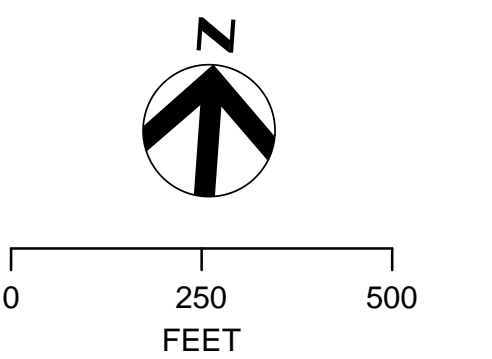
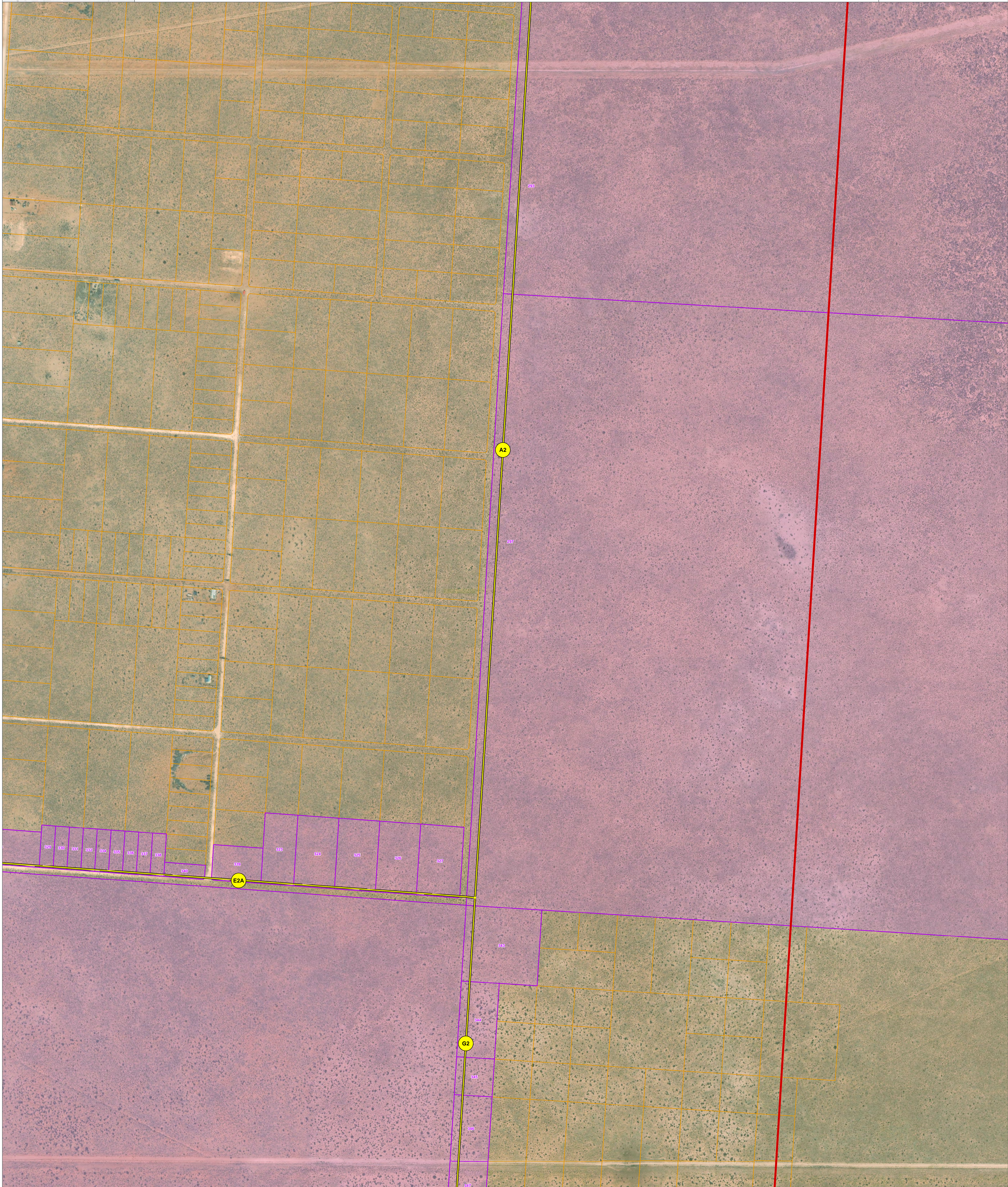
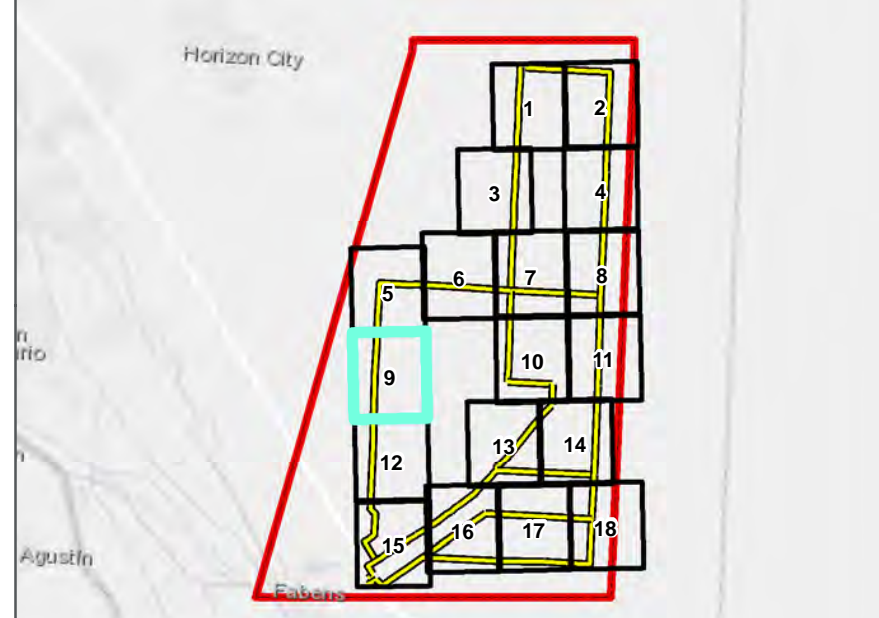


FIGURE 1-8





- PROJECT COMPONENTS**
- ▭ PHASE II STUDY AREA
 - ▭ ALTERNATIVE TRANSMISSION LINE SEGMENT
 - SEGMENT NODE

- LANDUSE**
- ▭ NOTIFIED PARCEL
 - ▭ PARCEL BOUNDARY
 - HABITABLE STRUCTURE WITHIN 300 FEET OF ALTERNATIVE SEGMENT

- EXISTING UTILITIES**
- EXISTING 69 KV TRANSMISSION LINE
 - EXISTING 115 KV TRANSMISSION LINE
 - ▭ SUBSTATION SITE

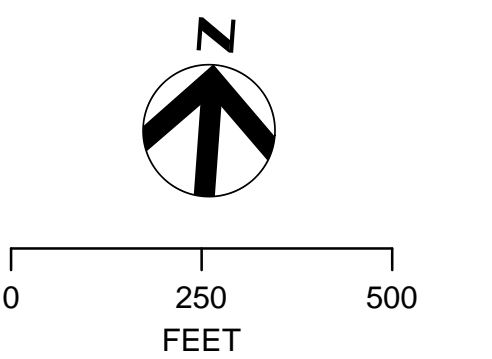
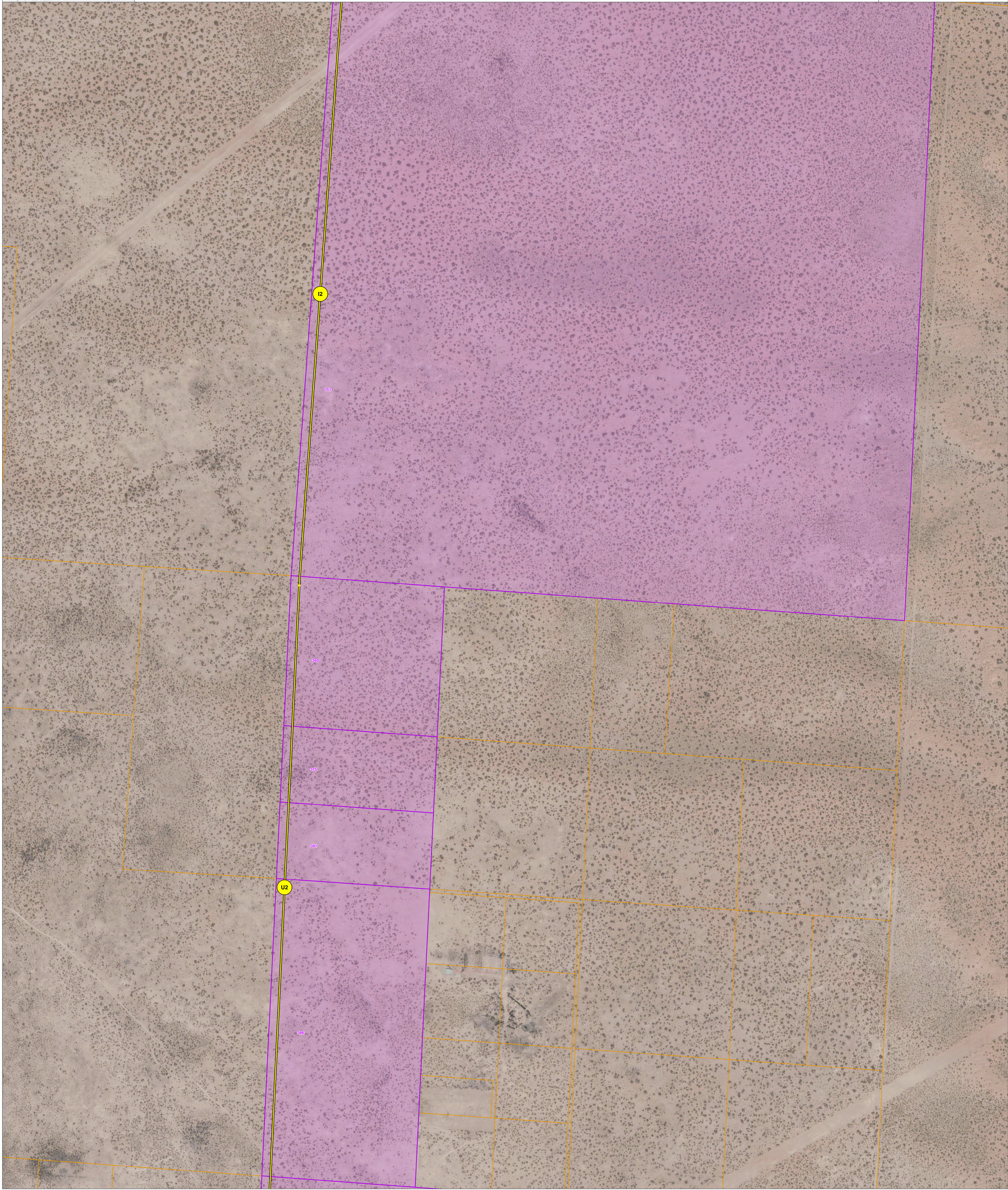
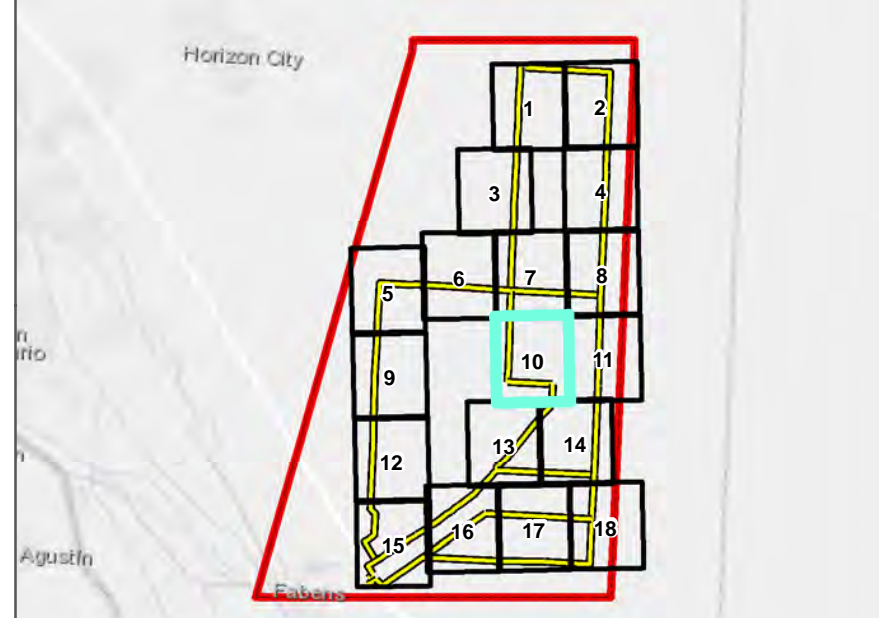


FIGURE 1-9





- PROJECT COMPONENTS**
- PHASE II STUDY AREA
 - ALTERNATIVE TRANSMISSION LINE SEGMENT
 - SEGMENT NODE

- LANDUSE**
- NOTIFIED PARCEL
 - PARCEL BOUNDARY
 - HABITABLE STRUCTURE WITHIN 300 FEET OF ALTERNATIVE SEGMENT

- EXISTING UTILITIES**
- EXISTING 69 KV TRANSMISSION LINE
 - EXISTING 115 KV TRANSMISSION LINE
 - SUBSTATION SITE

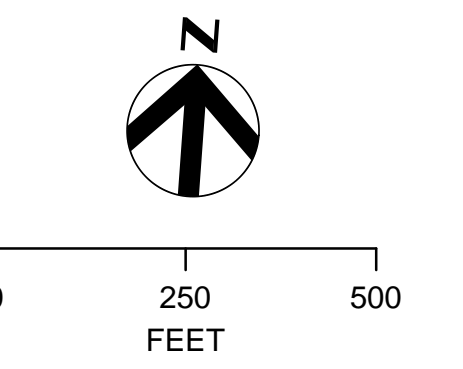
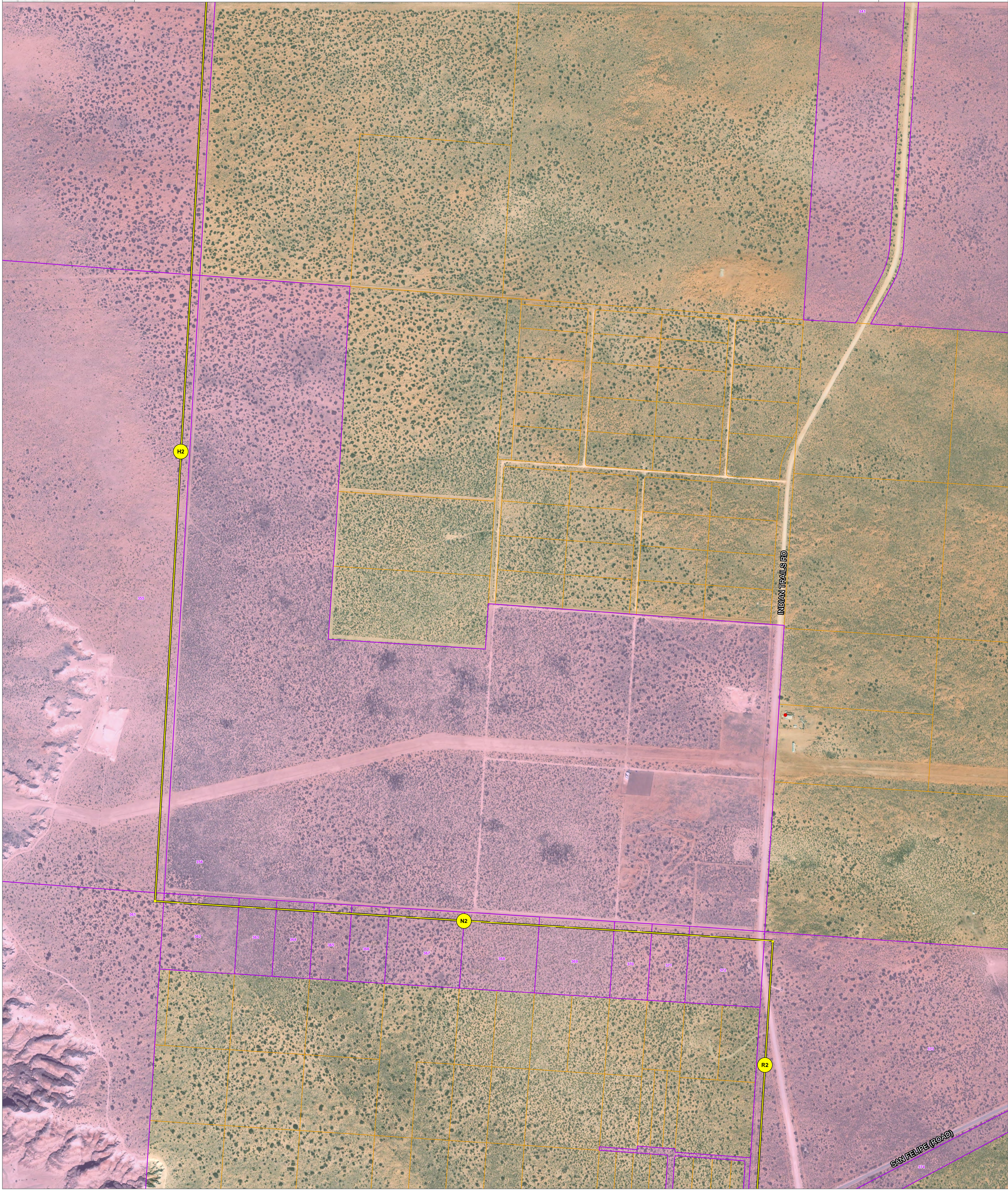
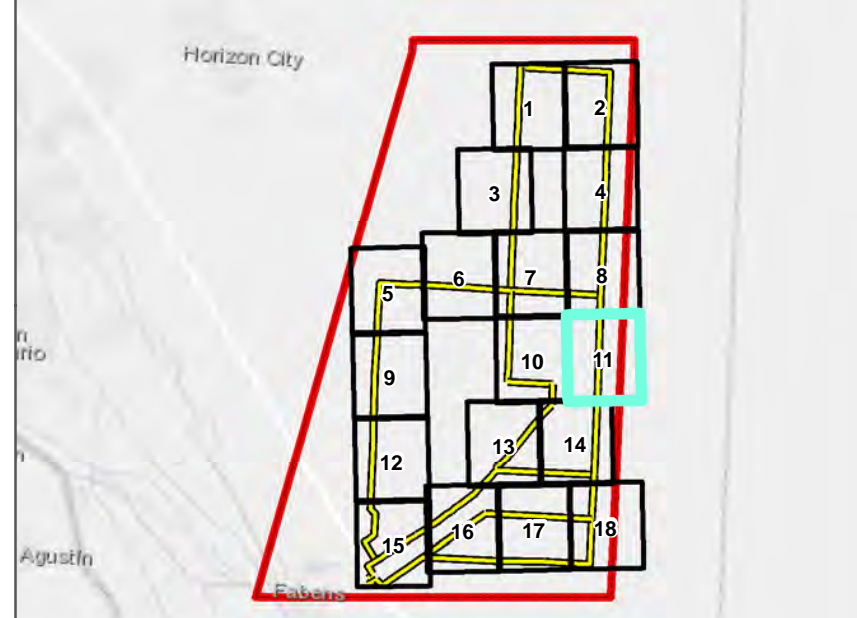


FIGURE 1-10





- PROJECT COMPONENTS**
- ▭ PHASE II STUDY AREA
 - ▭ ALTERNATIVE TRANSMISSION LINE SEGMENT
 - SEGMENT NODE

- LANDUSE**
- ▭ NOTIFIED PARCEL
 - ▭ PARCEL BOUNDARY
 - HABITABLE STRUCTURE WITHIN 300 FEET OF ALTERNATIVE SEGMENT

- EXISTING UTILITIES**
- EXISTING 69 KV TRANSMISSION LINE
 - EXISTING 115 KV TRANSMISSION LINE
 - ▭ SUBSTATION SITE

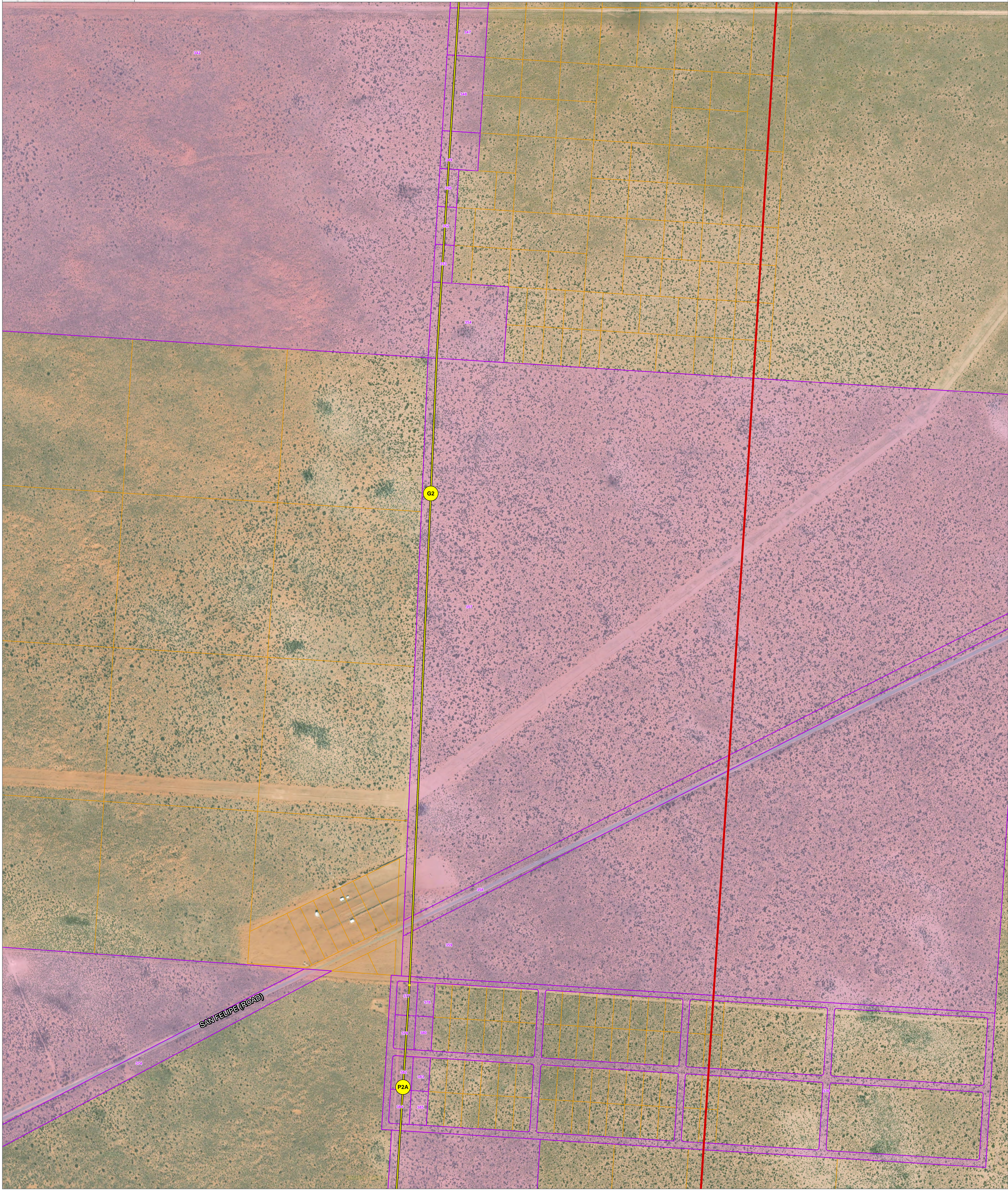
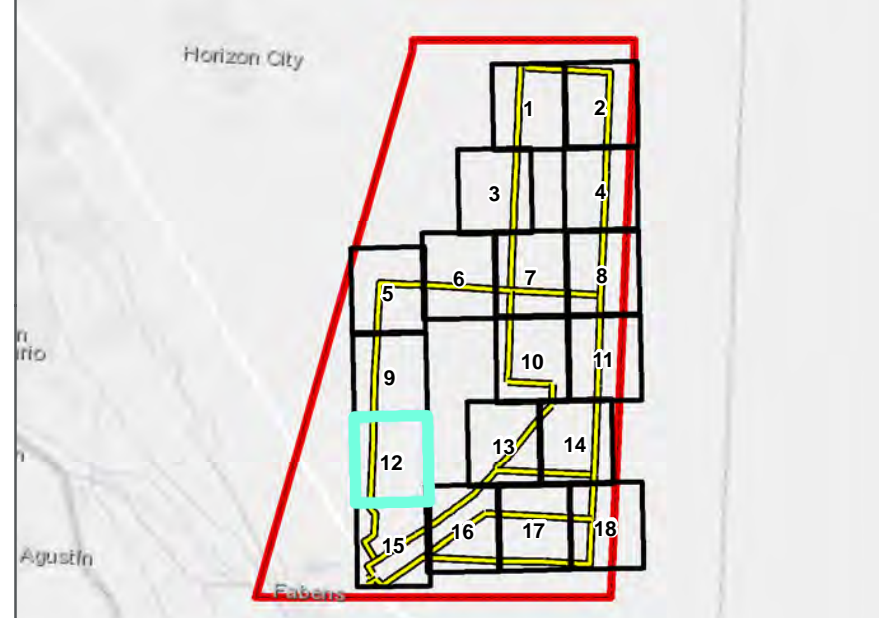


FIGURE 1-12

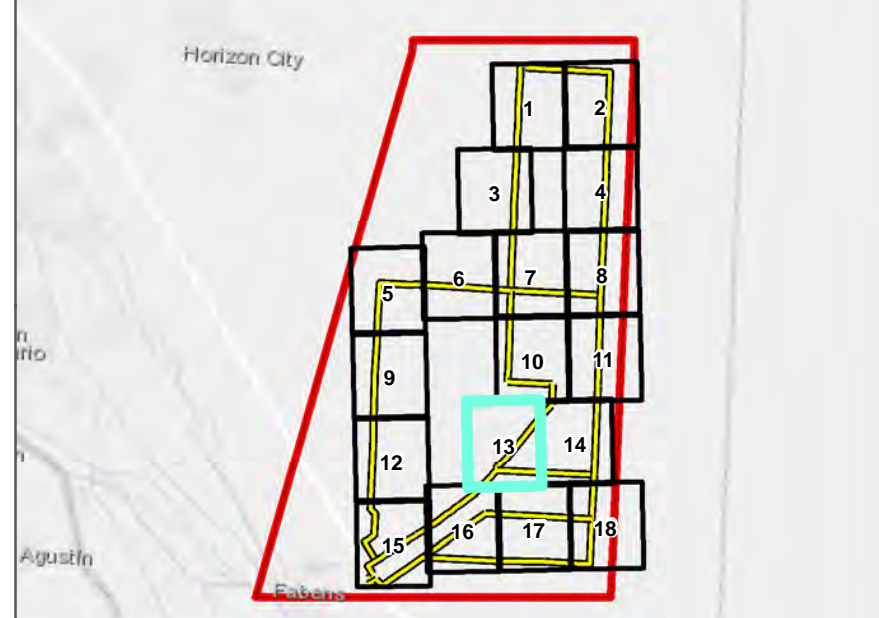


- PROJECT COMPONENTS**
- PHASE II STUDY AREA
 - ALTERNATIVE TRANSMISSION LINE SEGMENT
 - SEGMENT NODE

- LANDUSE**
- NOTIFIED PARCEL
 - PARCEL BOUNDARY
 - HABITABLE STRUCTURE WITHIN 300 FEET OF ALTERNATIVE SEGMENT

- EXISTING UTILITIES**
- EXISTING 69 KV TRANSMISSION LINE
 - EXISTING 115 KV TRANSMISSION LINE
 - SUBSTATION SITE





- PROJECT COMPONENTS**
- PHASE II STUDY AREA
 - ALTERNATIVE TRANSMISSION LINE SEGMENT
 - SEGMENT NODE

- LANDUSE**
- NOTIFIED PARCEL
 - PARCEL BOUNDARY
 - HABITABLE STRUCTURE WITHIN 300 FEET OF ALTERNATIVE SEGMENT

- EXISTING UTILITIES**
- EXISTING 69 KV TRANSMISSION LINE
 - EXISTING 115 KV TRANSMISSION LINE
 - SUBSTATION SITE

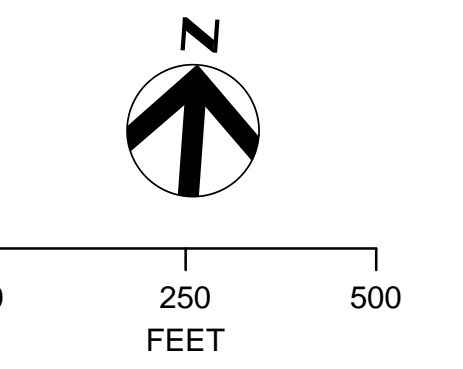
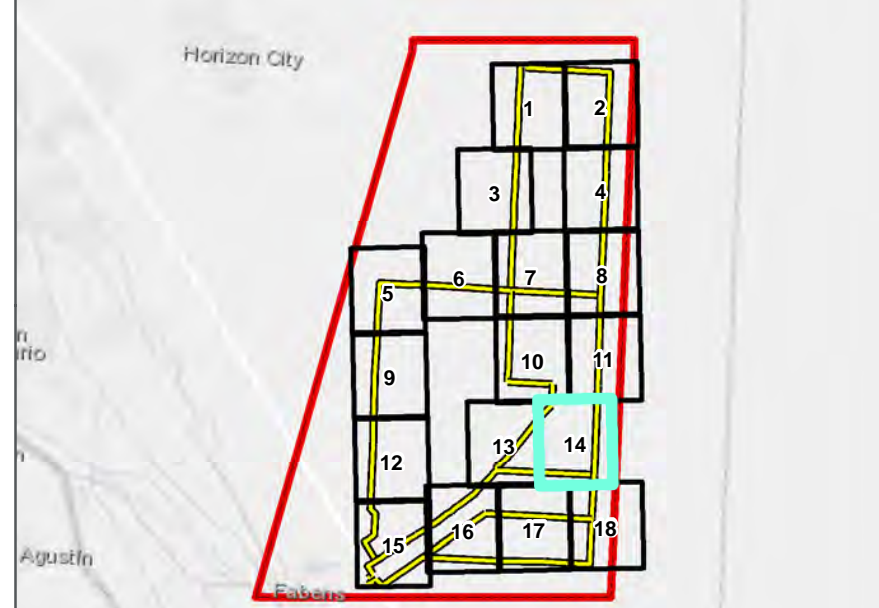


FIGURE 1-13



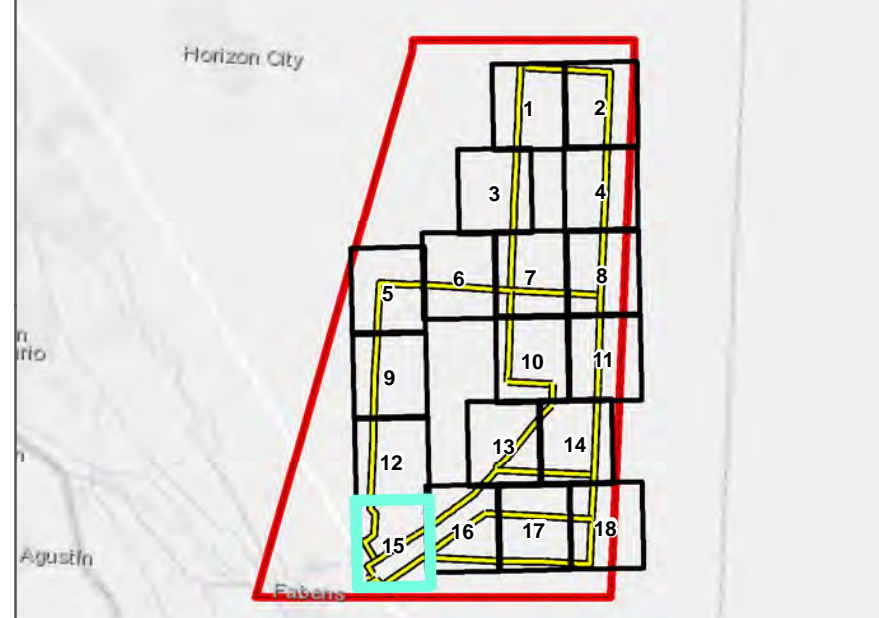


- PROJECT COMPONENTS**
- ▭ PHASE II STUDY AREA
 - ▭ ALTERNATIVE TRANSMISSION LINE SEGMENT
 - SEGMENT NODE

- LANDUSE**
- ▭ NOTIFIED PARCEL
 - ▭ PARCEL BOUNDARY
 - HABITABLE STRUCTURE WITHIN 300 FEET OF ALTERNATIVE SEGMENT

- EXISTING UTILITIES**
- EXISTING 69 KV TRANSMISSION LINE
 - EXISTING 115 KV TRANSMISSION LINE
 - SUBSTATION SITE





- PROJECT COMPONENTS**
- PHASE II STUDY AREA
 - ALTERNATIVE TRANSMISSION LINE SEGMENT
 - SEGMENT NODE

- LANDUSE**
- NOTIFIED PARCEL
 - PARCEL BOUNDARY
 - HABITABLE STRUCTURE WITHIN 300 FEET OF ALTERNATIVE SEGMENT

- EXISTING UTILITIES**
- EXISTING 69 KV TRANSMISSION LINE
 - EXISTING 115 KV TRANSMISSION LINE
 - SUBSTATION SITE

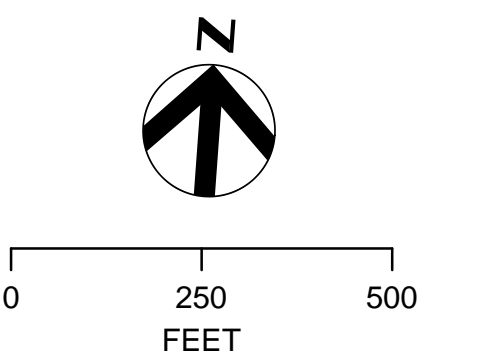
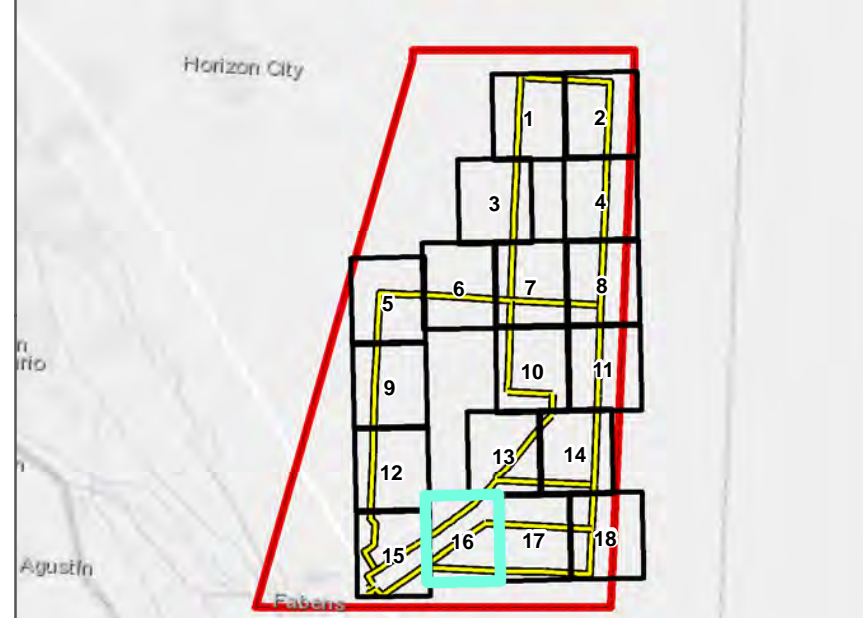


FIGURE 1-15



SAN FELIPE SUBSTATION SITE



- PROJECT COMPONENTS**
- PHASE II STUDY AREA
 - ALTERNATIVE TRANSMISSION LINE SEGMENT
 - SEGMENT NODE

- LANDUSE**
- NOTIFIED PARCEL
 - PARCEL BOUNDARY
 - HABITABLE STRUCTURE WITHIN 300 FEET OF ALTERNATIVE SEGMENT

- EXISTING UTILITIES**
- EXISTING 69 KV TRANSMISSION LINE
 - EXISTING 115 KV TRANSMISSION LINE
 - SUBSTATION SITE

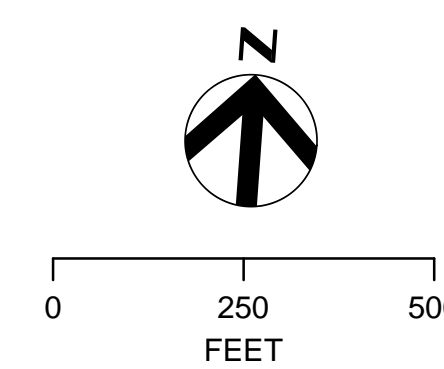
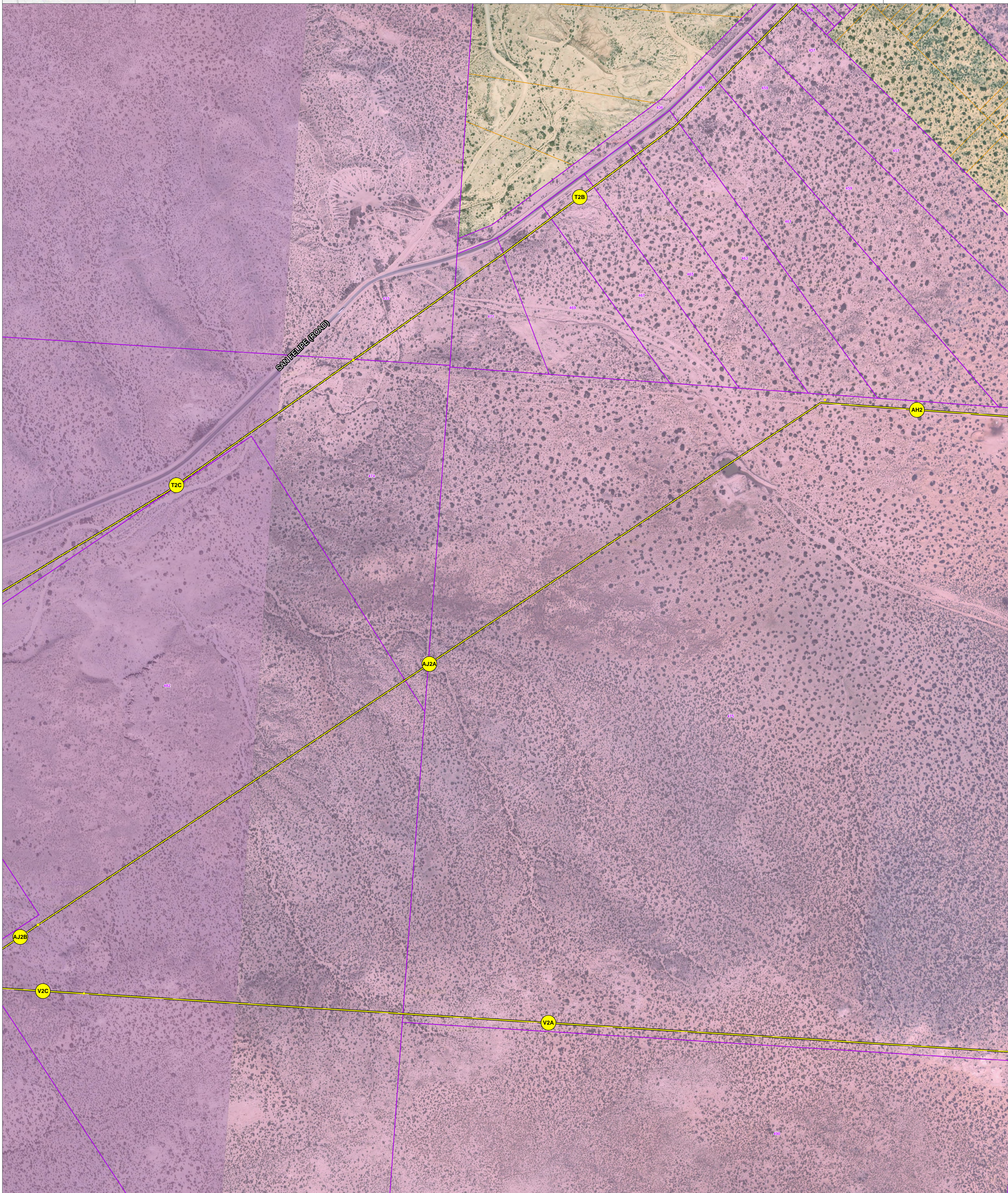
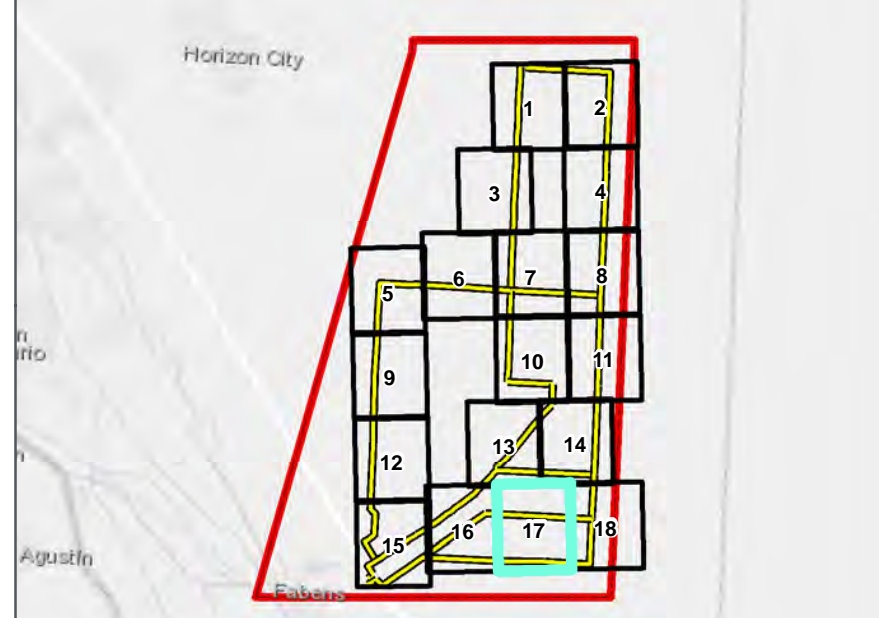


FIGURE 1-16





- PROJECT COMPONENTS**
- PHASE II STUDY AREA
 - ALTERNATIVE TRANSMISSION LINE SEGMENT
 - SEGMENT NODE

- LANDUSE**
- NOTIFIED PARCEL
 - PARCEL BOUNDARY
 - HABITABLE STRUCTURE WITHIN 300 FEET OF ALTERNATIVE SEGMENT

- EXISTING UTILITIES**
- EXISTING 69 KV TRANSMISSION LINE
 - EXISTING 115 KV TRANSMISSION LINE
 - SUBSTATION SITE

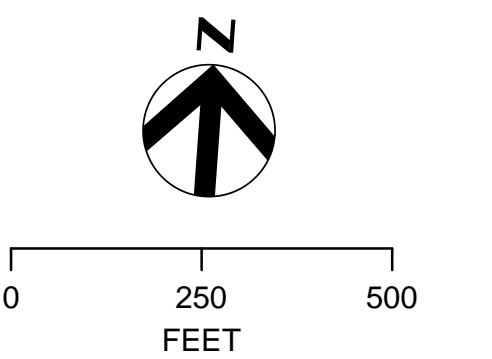
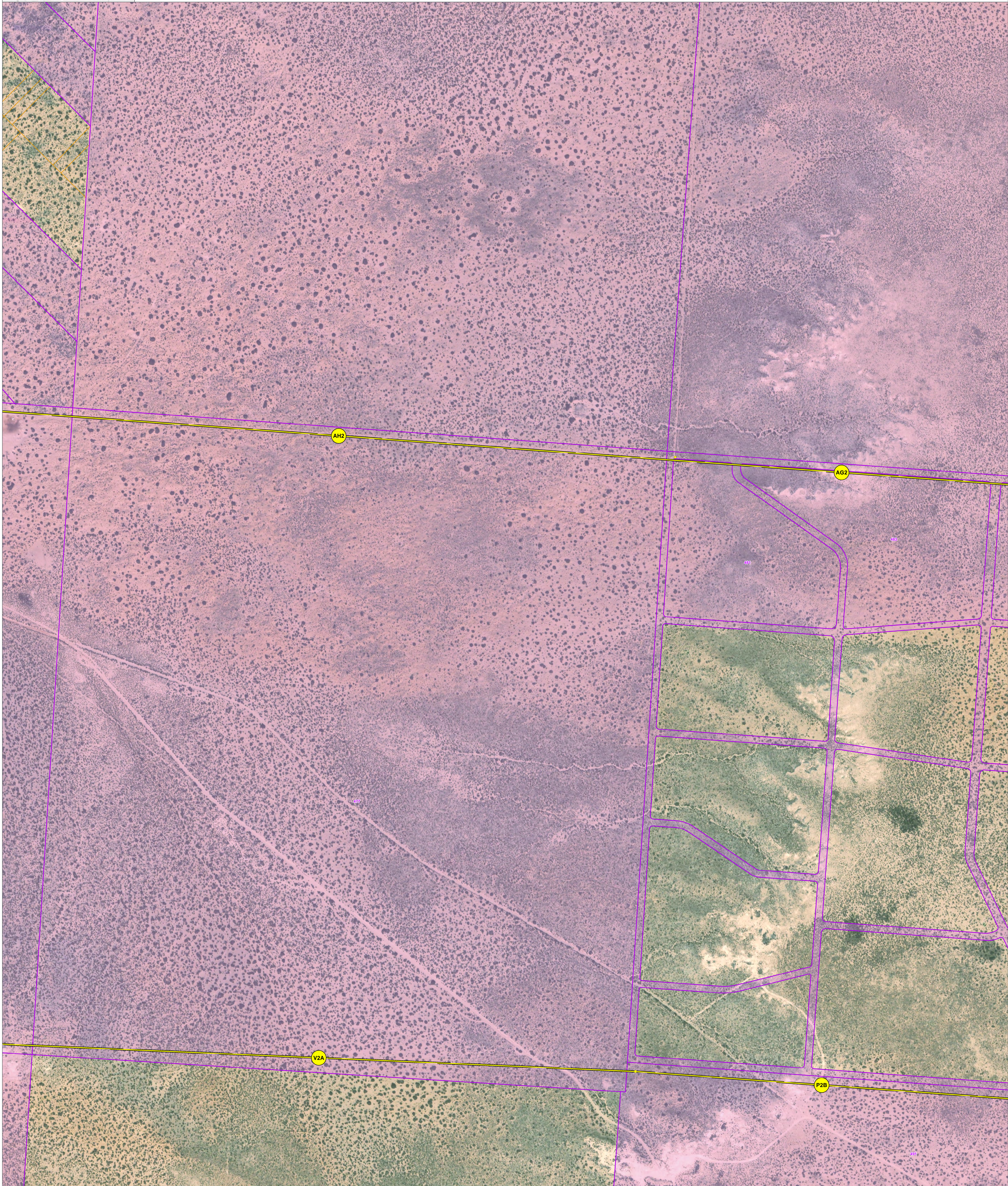


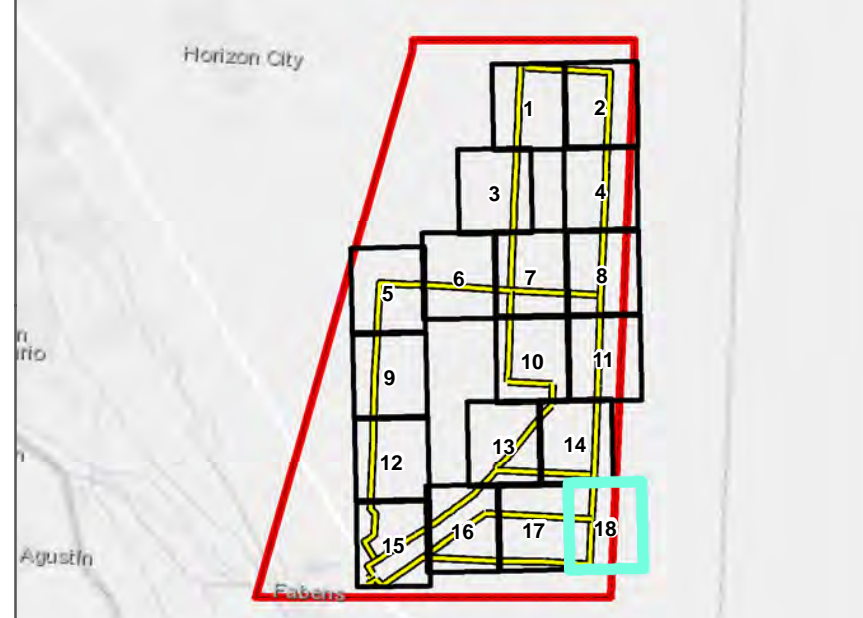
FIGURE 1-17





EASTSIDE LOOP EXPANSION - PHASE II

LOCATION OF DIRECTLY AFFECTED PARCELS AND HABITABLE STRUCTURES



- PROJECT COMPONENTS**
- PHASE II STUDY AREA
 - ALTERNATIVE TRANSMISSION LINE SEGMENT
 - SEGMENT NODE

- LANDUSE**
- NOTIFIED PARCEL
 - PARCEL BOUNDARY
 - HABITABLE STRUCTURE WITHIN 300 FEET OF ALTERNATIVE SEGMENT

- EXISTING UTILITIES**
- EXISTING 69 KV TRANSMISSION LINE
 - EXISTING 115 KV TRANSMISSION LINE
 - SUBSTATION SITE

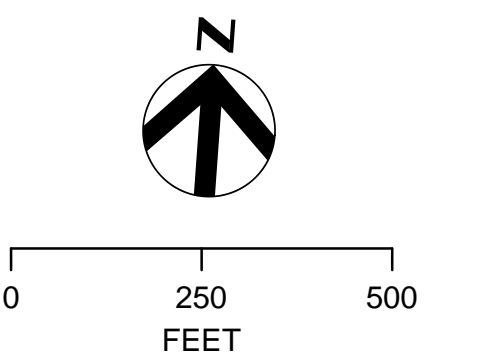


FIGURE 1-18

