



# POWERING OUR REGION

## ABOUT EL PASO ELECTRIC

El Paso Electric is a regional electric utility providing generation, transmission and distribution service to approximately 420,000 retail and wholesale customers in a 10,000 square mile area of the Rio Grande Valley in West Texas and southern New Mexico. Its service territory extends from Hatch, New Mexico to Van Horn, Texas.

### HEADQUARTERS: EL PASO, TX

APPROXIMATELY  
**1,100**  
EMPLOYEES



MORE THAN  
**420,000**  
CUSTOMERS

**MARY KIPP**  
PRESIDENT AND CEO

NEW YORK STOCK EXCHANGE  
**NYSE: EE**

## 2017 ESTIMATED CONTRIBUTIONS TO THE REGION'S ECONOMY

TOTAL ECONOMIC IMPACT

**\$863M**

DIRECT EMPLOYMENT

**1,415**

PHILANTHROPIC GIVING:

**1.24M**



DIRECT, INDIRECT & INDUCED EMPLOYMENT

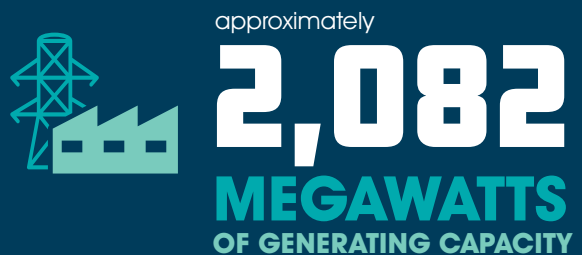
**2,611**

VOLUNTEER HOURS CONTRIBUTED BY EMPLOYEES:

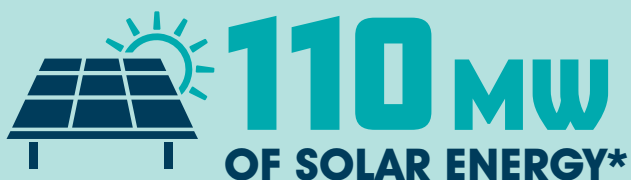
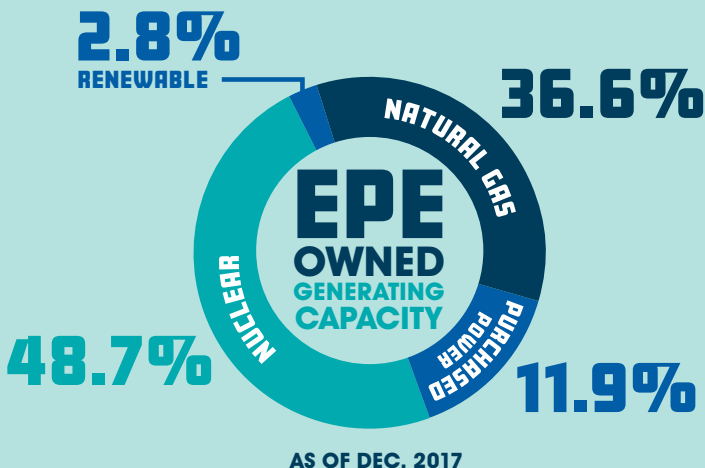
**8,800**

# SERVICE TERRITORY

MORE THAN  
**10,000**  
SQUARE MILES

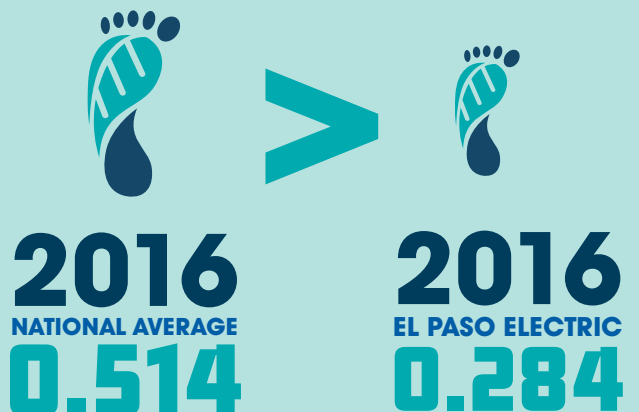


## ENERGY MIX



## CARBON FOOTPRINT

(SHORT TONS CO<sub>2</sub> EQUIVALENT EMISSIONS/MWH)  
U.S. AVERAGE VS. EL PASO ELECTRIC



 **COAL FREE**  
**SINCE 2016**

\*INCLUDES EL PASO ELECTRIC OWNED FACILITIES AND PURCHASED POWER AGREEMENTS.