



PROPOSED ALTERNATE ROUTES

PROPOSED ALTERNATE ROUTE 1: A2-G2-P2A-P2B-V2A-V2C-V2B-V2Y

PROPOSED ALTERNATE ROUTE 2: A2-G2-P2A-P2C-AG2-AH2-AJ2A-AJ2B-VB-V2Y

PROPOSED ALTERNATE ROUTE 10: B2-C2-H2-N2-R2-T2A-T2B-T2C-T2D-AQ2-AA2

PROPOSED ALTERNATE ROUTE 12: B2-C2-F2-I2-U2-AD2-AE2-AA2

PROPOSED ALTERNATE ROUTE 14: B2-C2-E2B-E2A-G2-P2A-AK2-AL2-T2B-T2C-T2D-AD2-AA2

PROJECT COMPONENTS

- PHASE II STUDY AREA
- ALTERNATE TRANSMISSION LINE SEGMENT
- SEGMENT NODE

LANDUSE

- PARCEL BOUNDARY
- PERMANENT UNIVERSITY FUND LANDS
- CITY OF SOCORRO EXTRATERRITORIAL JURISDICTION (ETJ)
- SAN FELIPE PARK
- COMMUNICATION TOWER
- HABITABLE STRUCTURE WITHIN 300 FEET OF PRELIMINARY SEGMENT
- OIL/GAS PIPELINE

EXISTING UTILITIES

- EXISTING 69 KV TRANSMISSION LINE
- EXISTING 115 KV TRANSMISSION LINE
- AIRPORT
- RUNWAY
- SUBSTATION SITE
- GROUNDWATER WELL

SURFACE WATER

- STREAM/DRAINAGE
- WATER BODY
- WETLAND (NW)
- 100-YEAR FLOODPLAIN

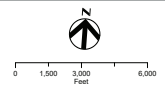
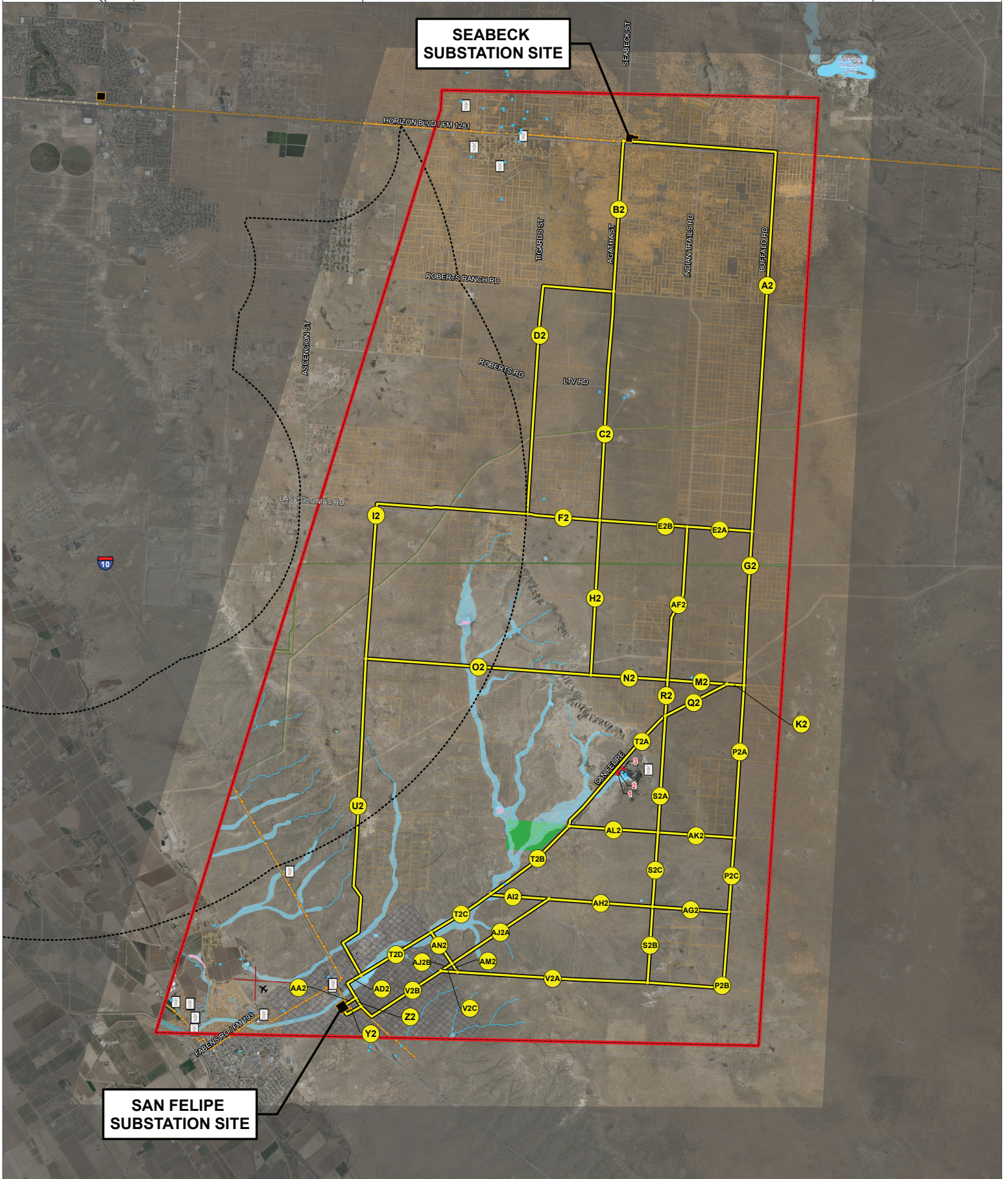


FIGURE 5-1



**SEABECK
SUBSTATION SITE**

**SAN FELIPE
SUBSTATION SITE**

*SENSITIVE CULTURAL RESOURCE DATA ARE NOT SHOWN ON THIS MAP AS THESE DATA ARE NOT TO BE REPRODUCED OR RELEASED TO THE PUBLIC. *AERIAL IMAGERY: GOOGLE 2014