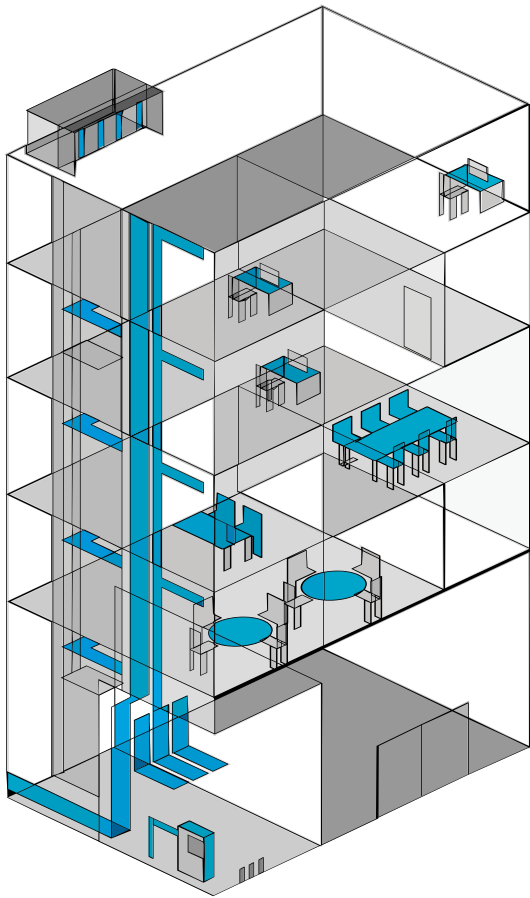




BUILDINGS ARE FULL OF HIDDEN POTENTIAL



COMMERCIAL AND INDUSTRIAL BUILDINGS consume over **50% of energy** in New Mexico¹



ADVANCED ENERGY MANAGEMENT STRATEGIES are **creating new opportunities** to monetize building load flexibility



AS MUCH AS 30% OF BUILDING ENERGY consumption can be eliminated through more accurate sensing, more effective use of existing controls, and deployment of advanced controls²



10-20% OF PEAK LOAD FROM COMMERCIAL BUILDINGS can be temporarily managed or curtailed to provide grid services³

Trane can implement automated demand response strategies for participating customers. Enrolled customers can receive cash incentives for participating in demand response events.

For example, utility customers with 100kW of electricity reduction could potentially earn more than **\$18K in utility incentives** over the life of the program.

1. EIA 2016 <https://www.eia.gov/state/?sid=NM#tabs-2>
2. Impacts of Commercial Building Controls on Energy Savings and Peak Load Reduction, May 2017, <https://buildingretuning.pnnl.gov/publications/PNNL-25985.pdf> (Fernandez et al. 2012; Fernandez et al. 2014; AEDG 2008)
3. Impacts of Commercial Building Controls on Energy Savings and Peak Load Reduction, May 2017, <https://buildingretuning.pnnl.gov/publications/PNNL-25985.pdf> (Kiliccote et al. 2016; Piette et al. 2007)

Trane is the official administrator of the El Paso Electric Commercial Load Management Program



To sign up for the program or to learn more, contact Tony Reyes at (915) 521-4660 or antonio.reyes@epelectric.com.



Trane – by Trane Technologies (NYSE: TT), a global climate innovator – creates comfortable, energy efficient indoor environments through a broad portfolio of heating, ventilating and air conditioning systems and controls, services, parts and supply. For more information, please visit trane.com or tranetechnologies.com.

All trademarks referenced in this document are the trademarks of their respective owners.

© 2020 Trane. All Rights Reserved.