

El Paso Electric's Jornada to Moongate 115kV Transmission Line Project

In order to continue to provide reliable electric service to Las Cruces and Doña Ana County customers and support the development of the East Mesa of Las Cruces, El Paso Electric (EPE) will be installing a new above-ground electrical transmission line. This work is needed so that EPE can continue providing electric service to a growing area of the city with safety and reliability.

The tremendous growth in Las Cruces' northeast sector and surrounding municipality is necessitating for El Paso Electric (EPE) to upgrade existing infrastructure for system reliability and continued service to all customers within the EPE service territory in Las Cruces and Doña Ana County. Part of this effort includes the construction of a new above-ground transmission line. A partial list of EPE customers who stand to benefit from this new line include the City of Las Cruces, Dona Ana County, White Sands Missile Range and NASA.

The 115 kilovolt (kV) transmission line will connect EPE's Jornada Substation, on the corner of Thurmond Road and Calle Paraiso, to the new Moongate Substation, which is currently under construction at the corner of Moongate Road and El Centro Boulevard. The transmission line will be approximately 8.8 miles long and will be constructed across privately owned parcels, New Mexico State Trust lands and within City of Las Cruces public rights-of-way.

Within City of Las Cruces Right-of-Way:

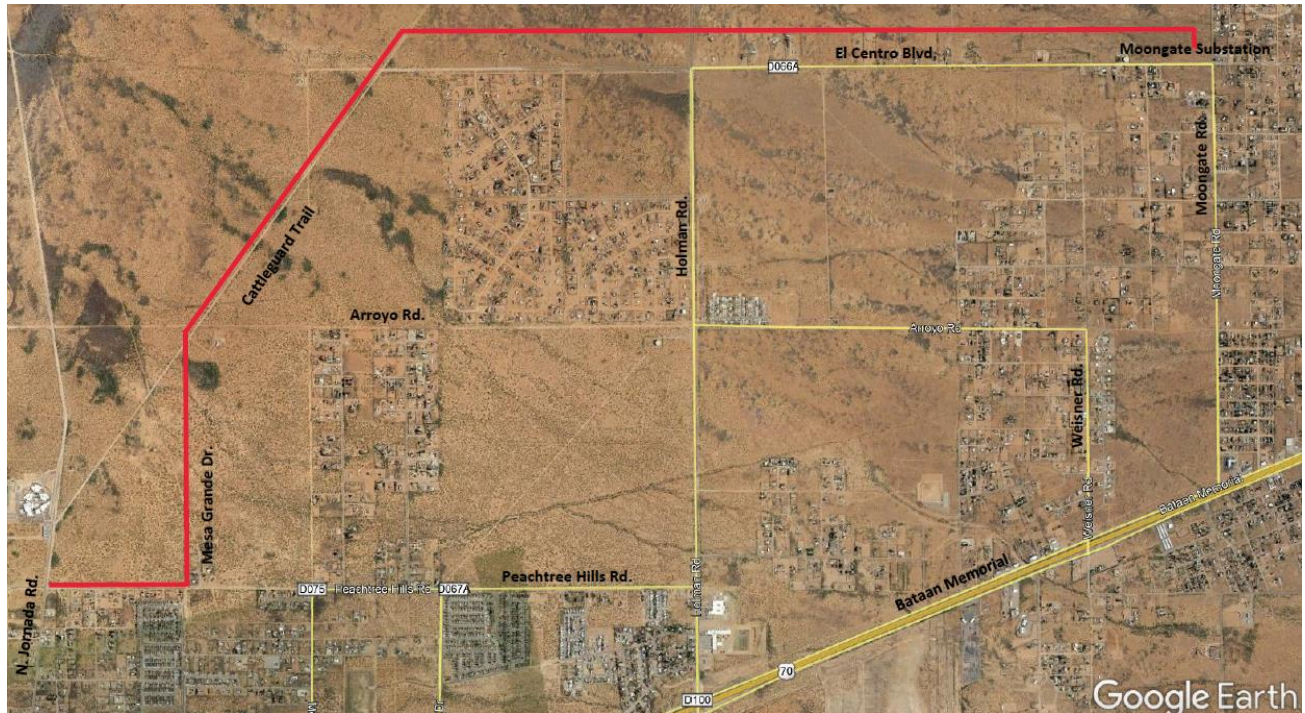
The project will include the installation of 35 transmission structures. The transmission line structures will be installed along Thurmond Rd., McGuffey St. and Peachtree Hills Blvd., as depicted in the map below. EPE worked with the City of Las Cruces and other stakeholders in the area in order to determine an economically efficient route that helped continue to serve our customers safely and reliably.



Timeline of the Project for Transmission Line Segment within City of Las Cruces Right-of-Way:

- **March 2021-** Begin installing reinforced-concrete foundations for transmission line structures along Peachtree Hills Blvd.
- **April 2021-** Begin installing transmission structures along Peachtree Hill Blvd.
- **Construction for the transmission line along Thurmond Rd. and McGuffey St. is scheduled for 3rd quarter 2021.**

Outside City of Las Cruces Right-of-Way, but within Doña Ana County:
 The project will include the installation of 63 transmission structures. The transmission line structures will be installed along Peachtree Hills Blvd., Mesa Grande Dr., Cattle Guard Trail and approximately 750 ft. north of El Centro Blvd. as depicted in the map below. EPE worked with the New Mexico State Land Office and other stakeholders in the area in order to determine an economically efficient route that helped continue to serve our customers safely and reliably.



Timeline of the Project for Transmission Line Segment outside City of Las Cruces Right-of-Way, but within Doña Ana County:

- March 2021- Begin installing transmission structures.

Project Background:

- July, 2018- Identification of rights of way needed for the transmission line route
- January, 2019- Noticing of property owners potentially impacted by right of way acquisition
- March, 2019 to January, 2020 – Discussions and coordination with City of Las Cruces and other land owners regarding options for the transmission line route
- December, 2020- Finalization of route