



**Media Contact:**

**Javier Camacho**  
Public Relations Specialist  
El Paso Electric Company  
C: 915.487.4753  
javier.camacho@epelectric.com

**PRESS RELEASE: May 14, 2019**

**Road Closure: El Paso Electric to Conduct Work Along E. Paisano Drive**  
*Several road closures south of I-10 Highway in Fox Plaza area*

**EL PASO, Texas** – As a continuation to an ongoing infrastructure upgrade project, El Paso Electric (EPE) will be replacing transmission lines along East Paisano Drive between Gateway Boulevard West and El Paso Drive, including several other roads in the area, tomorrow (Wednesday), May 15, 2019 from 8:30 p.m. to 5:00 a.m. Overnight traffic control measures will be in place from 8:00 p.m. to 6:00 a.m.

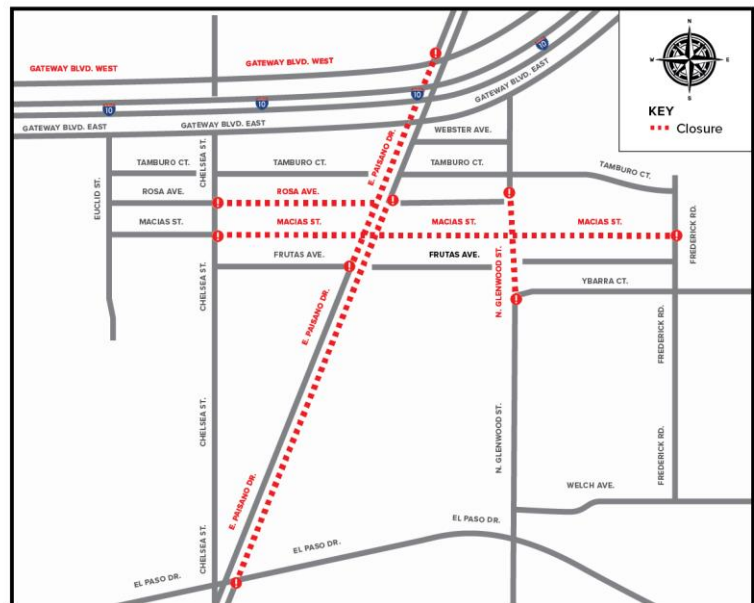
These roads in South Central El Paso are expected to reopen no later than 6:00 a.m. the morning of Thursday, May 16, 2019, at which point traffic control measures will be lifted.

Commuters are asked to safely follow detour signs in the area.

**Road Closure Information**

- Northbound traffic along E. Paisano Drive between El Paso Drive and Rosa Avenue
- Southbound traffic along E. Paisano Drive between Gateway Boulevard West and Frutas Avenue
- North- and southbound traffic along North Glenwood Street between Rosa Avenue and Ybarra Court
- East- and westbound traffic along Rosa Avenue between Chelsea Street and E. Paisano Drive
- East- and westbound traffic along Macias Street between Chelsea Street and Frederick Road

**East Paisano Drive Road Closure**



There will be an additional closure in this same area along Reynolds Street this Saturday, May 18. More information to follow.

*\*Map of road closures is also attached separately.*

**About El Paso Electric**

El Paso Electric is a regional electric utility providing generation, transmission and distribution service to approximately 425,600 retail and wholesale customers in a 10,000 square mile area of the Rio Grande valley in west Texas and southern New Mexico.

###

# East Paisano Drive Road Closure

