



Media Contact:

Javier Camacho

Public Relations Specialist

El Paso Electric Company

C: 915.487.4753

javier.camacho@epelectric.com

PRESS RELEASE: May 16, 2019

Daytime Road Closure: El Paso Electric to Conduct Work Along Reynolds Street
Road closures in Medical Center of Americas area

EL PASO, Texas – As a continuation to an ongoing infrastructure upgrade project, El Paso Electric (EPE) will be replacing transmission lines along Reynolds Street between Gateway Boulevard East and Alameda Avenue, and along Durazno Street between Radford and Reynolds Streets. These roads will be closed, Saturday, May 18, 2019 from 8:00 a.m. to 4:00 p.m. Traffic control measures will be in place during this time, along with El Paso Police on-site to provide emergency personnel access to the closed area as well as safely direct commuters through area detours.

Commuters are asked to safely follow detour signs in the area. To safely travel around the work area, EPE suggests using Yandell Drive to Paisano Drive, then Alameda Avenue to N. Copia Street back to Yandell Drive.

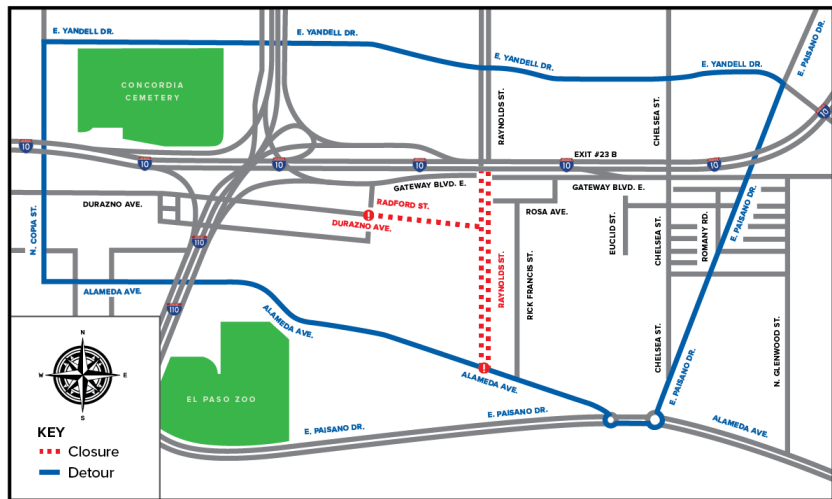
Road Closure Information

- North- and southbound along Reynolds Street from Alameda Avenue to Gateway Blvd East
- East- and westbound along Durazno Avenue from Radford Street to Reynolds Street

**Map of road closures is also attached separately.*

There will additional overnight closures in this same area along Reynolds Street and Gateway Blvd East next week, Tuesday and Wednesday, May 21 and 22. More information to follow.

Raynolds Street Road Closure



About El Paso Electric

El Paso Electric is a regional electric utility providing generation, transmission and distribution service to approximately 425,600 retail and wholesale customers in a 10,000 square mile area of the Rio Grande valley in west Texas and southern New Mexico.

###

[Facebook @ElPasoElectric](#) | www.epelectric.com | [Twitter @ElPasoElectric](#)

Raynolds Street Road Closure

